



IP Camera  
Management Software  
**IP TOOL**

# **User's Manual**

(EN Rev 1.1)

---

# **IP TOOL**

## **Installation and Operation Manual**

---

This user guide is explaining usage of IP TOOL.

Please be informed of this user guide before use of the product.

This user guide along with software, hardware explained in this manual will be protected by copyright law. So any attempt to copy part or whole of this manual, translation into other languages without permission of manufacturer will be prohibited except copy for normal use within the range of copyright law.

### **Warranty of product and limitation on liability**

Manufacturer is not liable for sales of this products and do not delegate authority to 3<sup>rd</sup> party to be liable instead of manufacturer. This document is used only for regular information and any risk following the use of this information will belong to user and all contents in this manual will not be assured.

**Contents of this manual could be different based on software upgrade and product design along with specification can be subject to be changed without any pre-notice to users.**

---

# Contents

<b>Contents .....</b>	<b>3</b>
<b>PRODUCT OVERVIEW .....</b>	<b>4</b>
<b>Basic Information.....</b>	<b>4</b>
<b>Restrictions by camera series.....</b>	<b>5</b>
<b>Main Features.....</b>	<b>6</b>
Change settings and initialization .....	6
IP and Port Change .....	6
<b>INSTALLATION .....</b>	<b>7</b>
<b>System Requirements .....</b>	<b>7</b>
<b>Notice before installation .....</b>	<b>7</b>
<b>Installation Program .....</b>	<b>7</b>
Installation .....	7
To verify the results of the installation.....	8
Upgrading .....	8
<b>GETTING STARTED.....</b>	<b>9</b>
Search camera.....	9
Restart camera.....	9
Reset settings .....	9
Change IP.....	10
Change IP Batch.....	10
Change settings Batch .....	11
Activate.....	12
Reset Password.....	13
Reset Password with Key .....	13
Live .....	14
Go to settings (Webviewer).....	14
Save camera list .....	14

# Product Overview

## Basic Information

IP TOOL is a control software that can check condition and change setting of IP Camera installed in remote locations. IP TOOL makes it easy to discover cameras, change IP addresses, restart the cameras, initialize settings, change the settings(via Webviewer), live monitoring, firmware update, IP address change of all cameras, activation, reset password, reset password with authentication key, and so on.

If there is a problem with the camera, you can reboot the camera using camera restart function or you can initialize the camera settings remotely. In addition, batch change of settings allows you to change multiple camera settings (Stream, Time, ISP) remotely in batches.

The IP change feature allows you to change the camera's IP Address, Gateway, Netmask, DNS, and Port to any value you want, and the IP batch change function makes it easy to assign the values sequentially from the user-set value.

The reset password (reset password with authentication key) function allows you to change the password of the camera to the initial value, and you can make camera inactive for some camera models. (see table below)  
Also, you can activate the inactivated camera with IP TOOL. For activation, new password assign is necessary, and some camera models (see table below) can set questions and answers that will be used to reset passwords.

Through VLC player, you can monitor the live video from a camera you choose, you can perform firmware upgrade without having to access the camera's web page. Also, you can open camera's web page by clicking Go to settings button and you can proceed with the desired action.

Through the Save camera list function, it provides the ability to save brief information of all discovered cameras as an Excel file.

# Restrictions by camera series

○: Support / △: Limited support

	NK Series	NT Series	NM Series
Camera Restart	○	○	○
Reset Settings	○ (Including IP/PW)	Unsupported	○ (Except IP/PW)
IP Change	○	○	○ (Unsupported for DHCP, Port Change)
IP Batch Change	○	○	○
Batch Change of Settings	○	○	○
Activate	△ (FW v3.0.1 or later)	Unsupported	○ (Only 1 LAN card must be used)
Reset Password	△ (FW v3.0.1 or later)	○ (Reset password will activate DHCP)	Unsupported
* Reset Password with authentication key	△ (FW v3.0.1 or later)	Unsupported	Unsupported
Live	○	○	○
Set up	○	○	○
Save Camera List	○	○	○
FW Update	○	○ (In case of two or more cameras, upgrades are performed sequentially)	○

\* Reset Password with authentication key

- Please contact technical support team for the information on generating authentication key.

---

# Main Features

## Change settings and initialization

This program allows you to perform a brief setup of your camera (Stream, Time, ISP) without accessing the web page. It can be applied not only to one camera but also to two or more cameras. Also, it supports initialization, which allows you to change all settings on the camera to their initial values.

- ✓ **Stream setting**
  - FPS
  - Bitrate
  - GoP(IDR)
- ✓ **Time setting**
  - SNTP
  - Get PC time
- ✓ **ISP setting**
  - Frequency

## IP and Port Change

Supports the ability to change the camera's IP Address and Gateway, Netmask, DNS1, DNS2, and Port settings. Activation of dynamic IP address(DHCP) also enables automatic assignment of currently available IP address. Supports the ability to assign IP address for multiple cameras sequentially using IP batch changes.

- ✓ **Dynamic IP address (DHCP) support**
- ✓ **IP Address, Gateway, Netmask, DNS Change**
- ✓ **Port Change**

---

# Installation

## System Requirements

Items	Recommended
OS	Windows 7(x64), Windows 10(x64)

## Notice before installation

IP TOOL is optimized for Windows 7 (x64)/ Windows 10 (x64) operating system.

You should always keep Windows up to date and install a vaccine program to prevent viruses and malware that affect your system operations.

### <Caution>

1. The PC user who has no permission to set the path to the folder that cannot write.
2. In order to avoid a conflict with the program that is used in the PC, close all programs that are running and encouraged to proceed with the installation.

## Installation Program

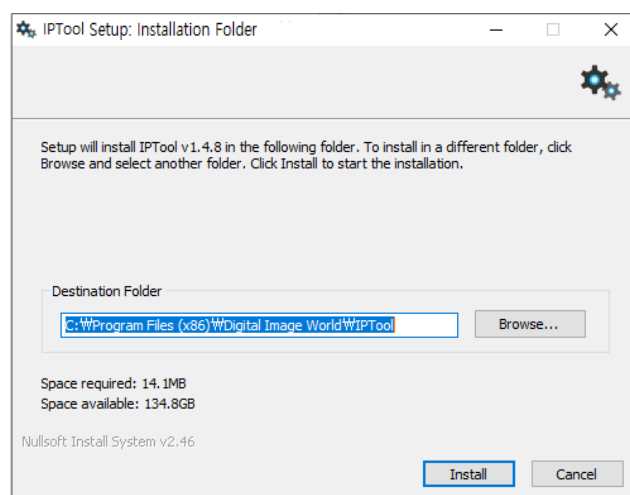
### Installation

Execute the install program to installing IP TOOL in PC.

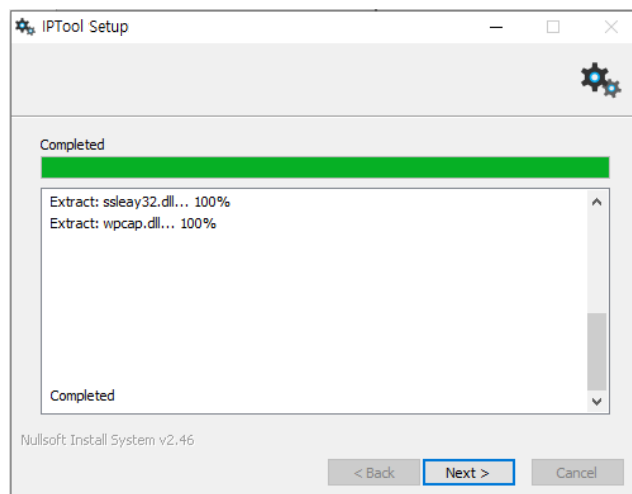
- 1) Run the IP TOOL installer program 'IPTool\_WGI\_Setup\_vX.X.X.exe' file which is located on the CD or on your PC.
- 2) Select the folder to install and click **[Install]** to start installation.

### <Note>

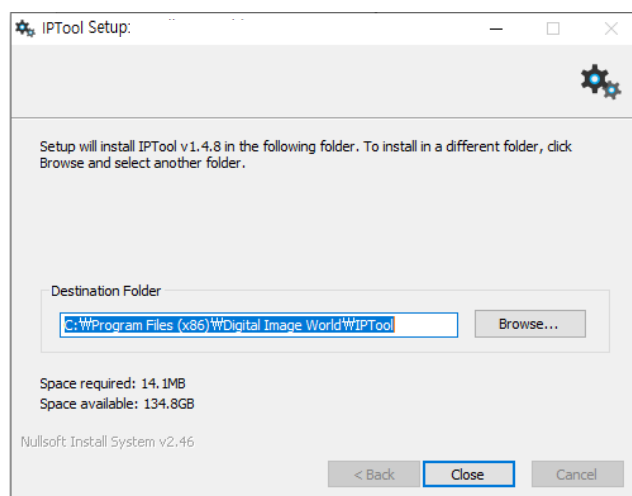
It is recommended to install on the default installation path.



3) Click **[Next>]** when the installation is complete.



4) Click **[Close]** to finish installation.



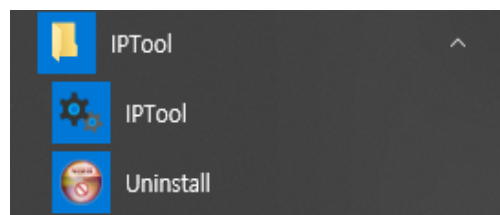
## To verify the results of the installation

To check whether IP TOOL installed in properly after completed the installation.

- 1) Go to Start → All program.
- 2) If IP TOOL is installed normally, 'IPTool' appears in the sub-step of 'IPTool' and 'Uninstall' is shown below it.

<Note>

It can be shown differently according to the version of Windows.



## Upgrading

In case the Control Center already installed on your PC, upgrade directly without going through the process of deleting the program file to run the program, the upgrade is possible.

The installation process is same as "new install" and it will keep exist setting during the program upgrading.



# Getting Started

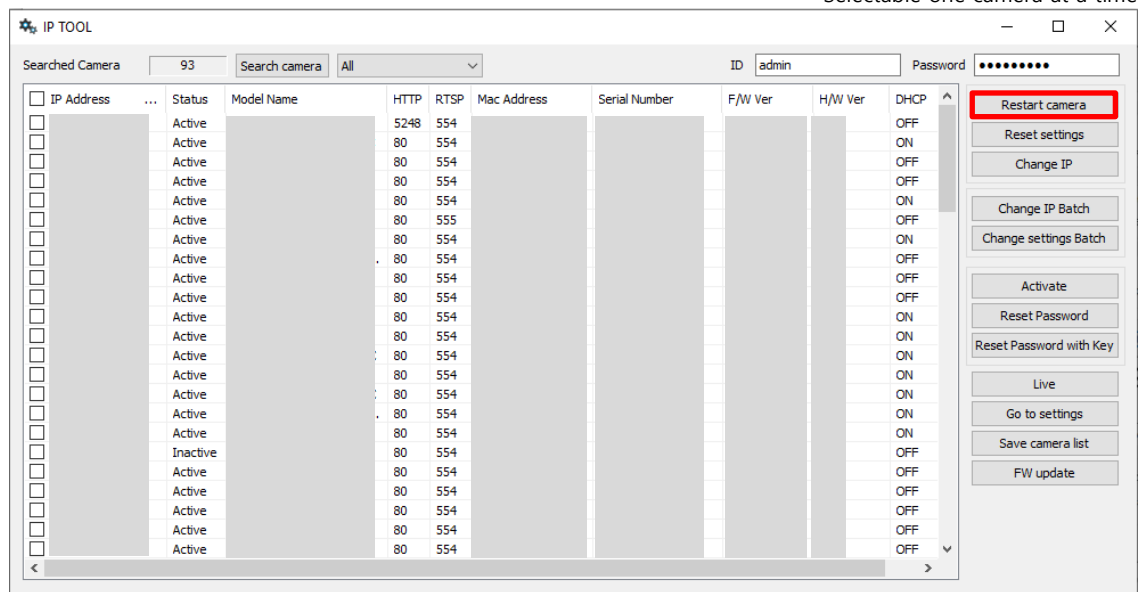
## Search camera

IPTool automatically searches the NK1080 series cameras on network and shows the list. To manually search the camera, clicks "Search camera" button.

## Restart camera

Type ID and password, and select a camera to restart and click "Restart camera". The camera will be restarted.

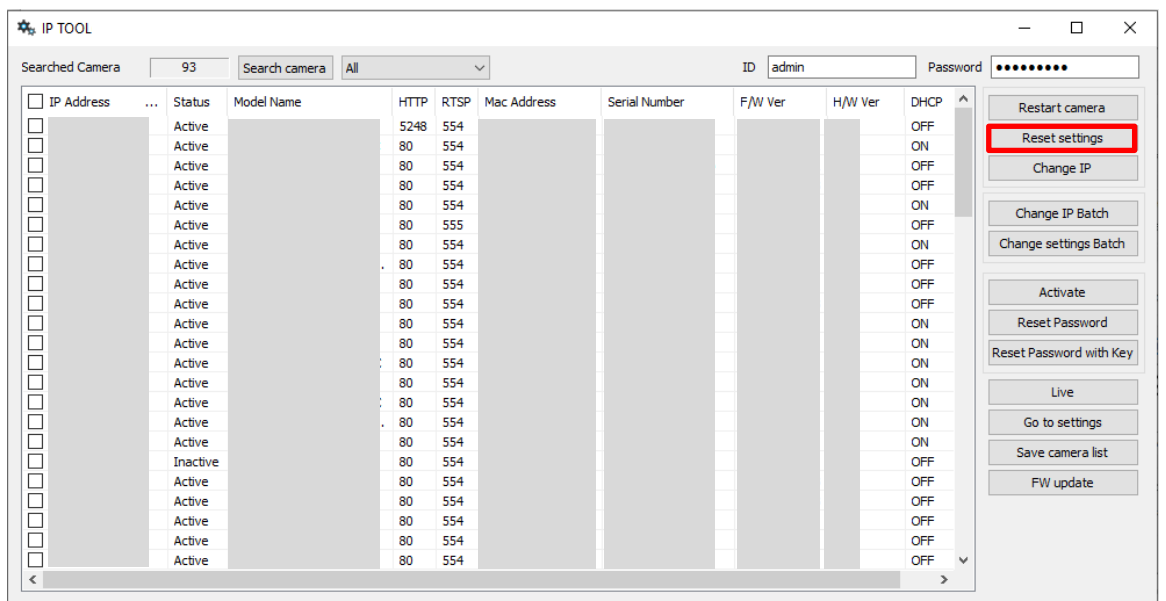
\* Selectable one camera at a time



## Reset settings

Type ID and password, and select a camera to reset settings and click "Reset settings". All settings of camera will be initialized.

\* Selectable one camera at a time



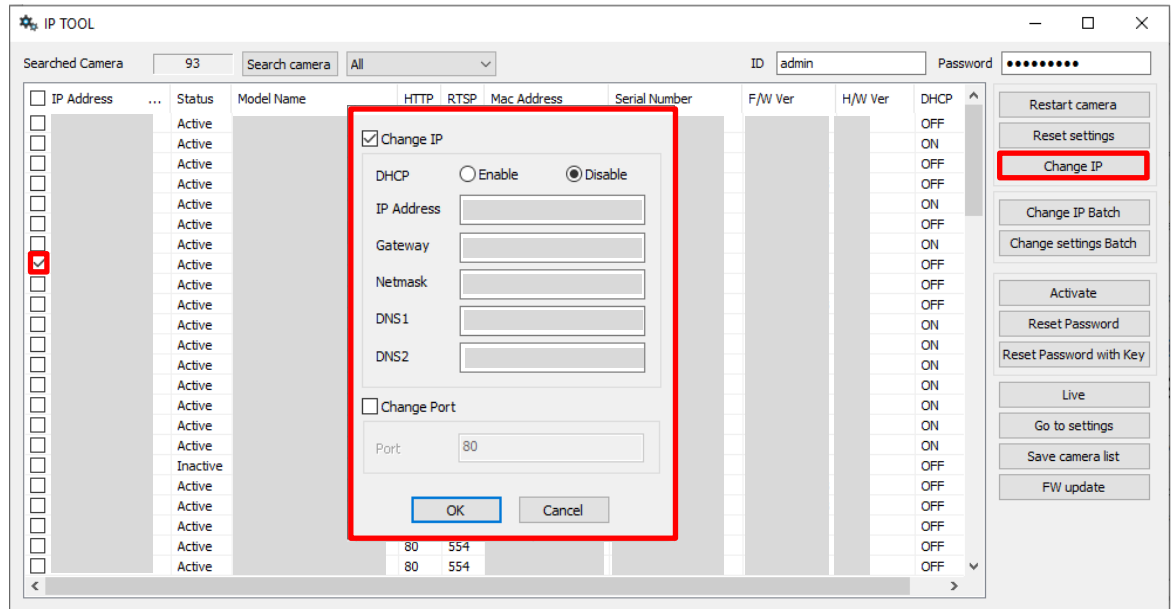
\* Check the restriction by camera model

## Change IP

Select a camera to change IP address, and type ID and password, and click "Change IP" button. Pop-up window comes to change IP address.

Type IP address, gateway, netmask, and DNS. Changed settings are applied by clicking "OK".

\* Selectable one camera at a time

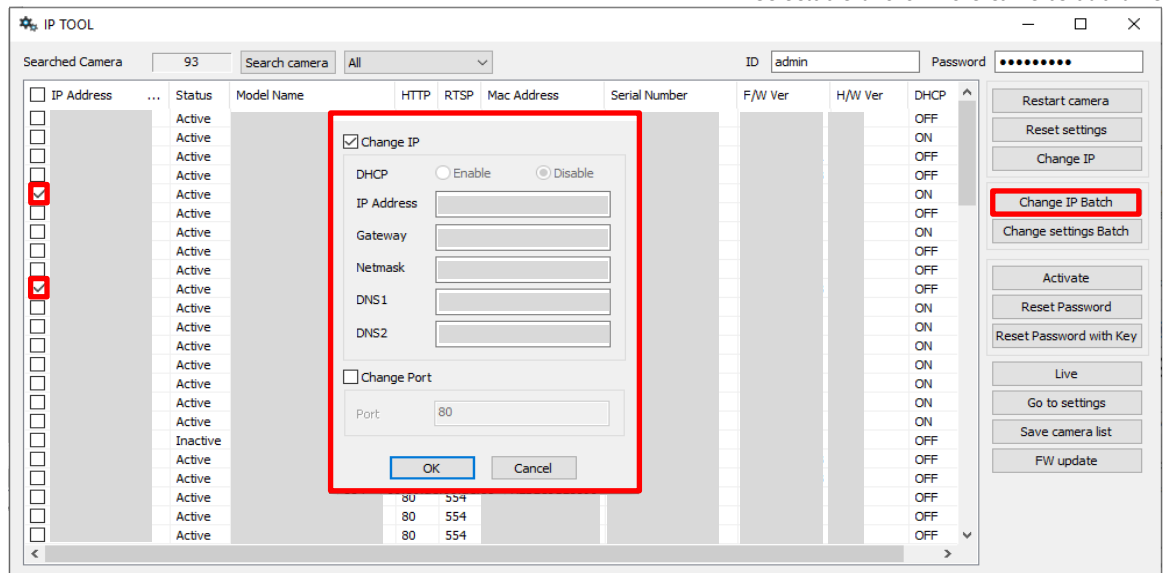


\* Check the restriction by camera model

## Change IP Batch

IPTOOL support 'Change IP Batch' function to change multiple camera's IP address at once. 'Change IP Batch' is very useful if there is no DHCP server on network. It can simultaneously assign multiple camera's IP address without overlapping.

\* Selectable two or more cameras at a time



\* Check the restriction by camera model

1. Type ID and password.
2. Select cameras which you want to change IP settings, and click "IP Batch Change".
3. Set IP address, Gateway, Netmask and DNS. Note that the IP address is start address.
4. In the order of the cameras aligned in the list, the value increased by 1 from the specified starting IP address is automatically set.

EX) If 10 cameras are selected and the "start IP address" is xxx.yyy.zzz.002, IP addresses of 10 camera will be changed to xxx.yyy.zzz.002 ~ xxx.yyy.zzz.011.

<Caution>

1. Note that IP address, Gateway, Netmask and DNS should be input to use "IP Batch Change" function.
2. IP address of each selected camera has IP address incremented by 1 from the starting IP address.
3. It is recommended that the number of cameras for "IP Batch Change" function should not exceed 100.

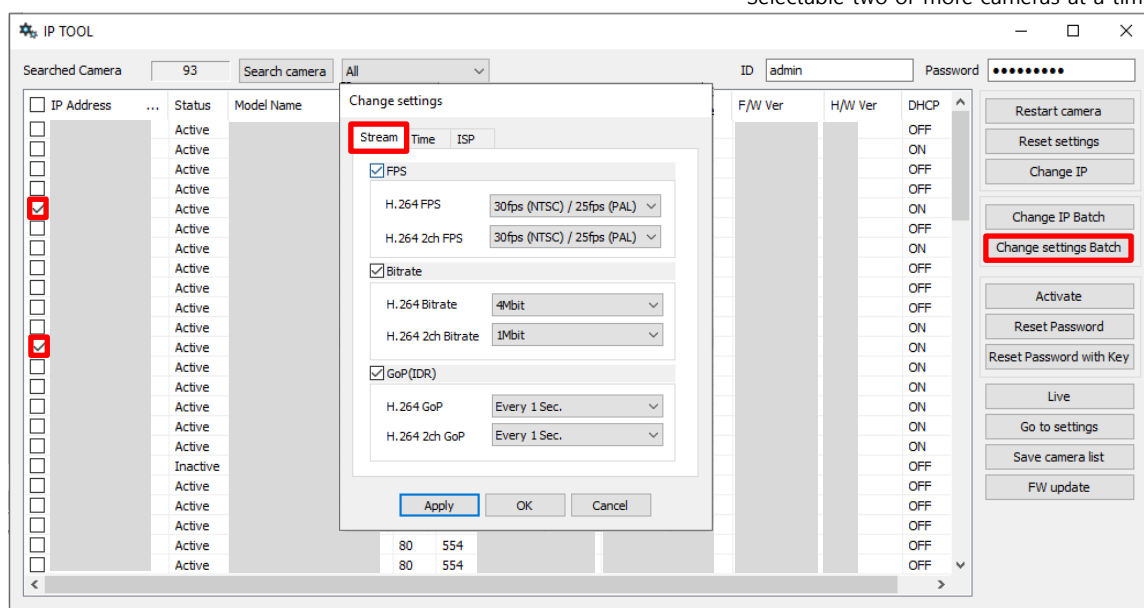
## Change settings Batch

### Stream

FPS and bitrate of multiple cameras can be changed simultaneously.

1. Enter ID and password for login.
2. Select cameras from the list which you want to change the stream settings.
3. change settings Batch → Select FPS and Bitrate of main and 2<sup>nd</sup> stream on the 'Stream' tab.

\* Selectable two or more cameras at a time

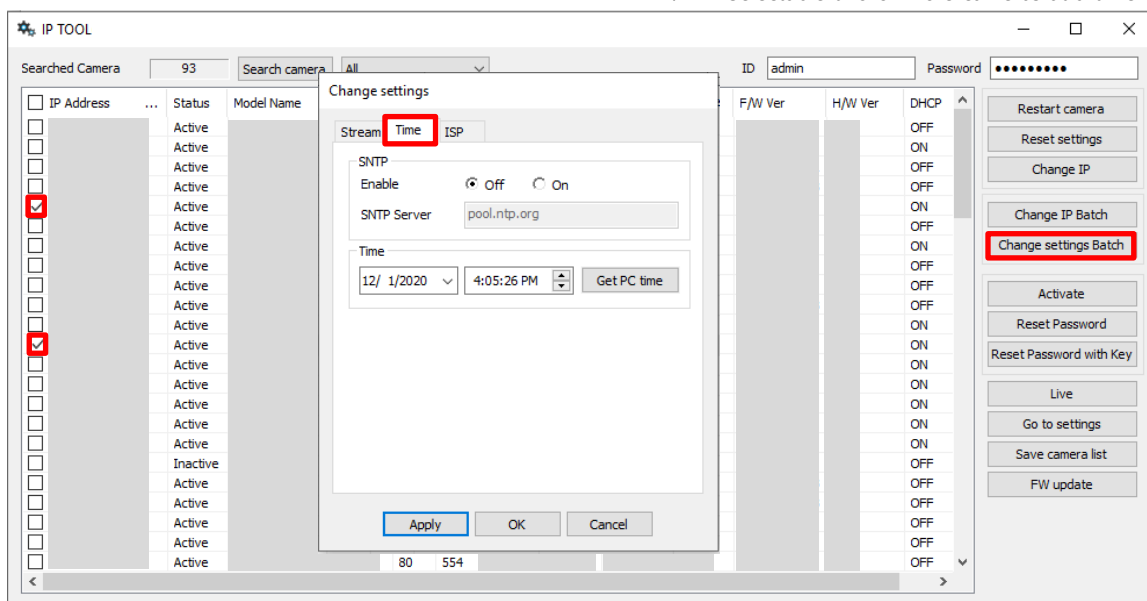


### Time

Time of multiple cameras can be changed simultaneously.

1. Enter ID and password for login.
2. Select cameras from the list which you want to change the time settings.
3. Change settings Batch → Set the time on the 'Time' tab.

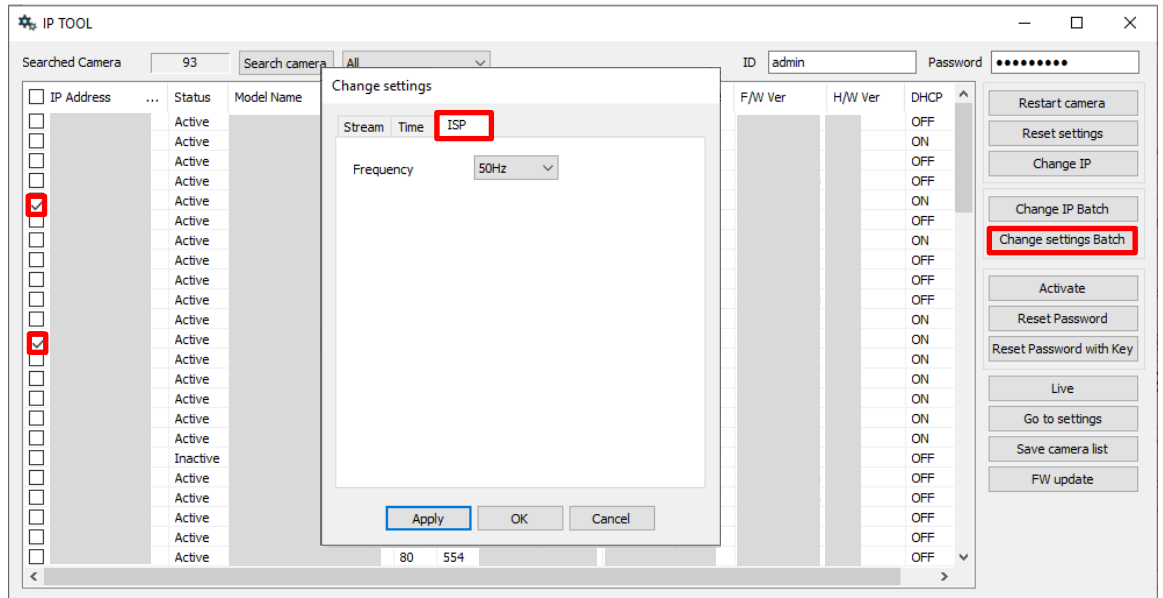
4. \* Selectable two or more cameras at a time



## ISP

User can change NTSC/PAL setting of multiple cameras simultaneously.

1. Enter ID and password for login.
2. Select cameras from the list which you want to change the ISP settings.
3. Change settings Batch → Select the Frequency (NTSC: 60Hz, PAL: 50Hz) on the 'ISP' tab.
4. \* Selectable two or more cameras at a time



## Activate

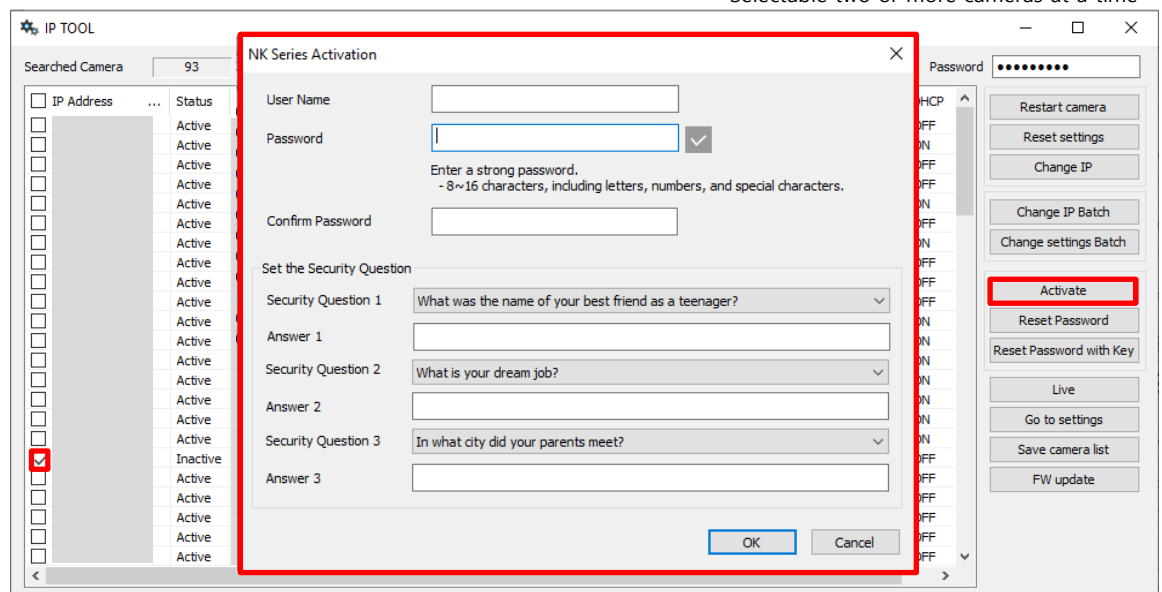
If a camera is inactive, you can click 'Activate' to use the camera.

1. Select the camera to activate.
2. Click 'Activate' button.
3. When the activation window pops up, enter the password you want to use, and enter the same password in the 'Confirm Password' box.
4. If you forget your password, as a way to find it, enter three questions and answers and click the 'OK' button. Activation is completed and Status will change from Inactive to Active.

<Note>

For NK series cameras, it is available from FW 3.X or higher.

\* Selectable two or more cameras at a time



\* Check the restriction by camera model

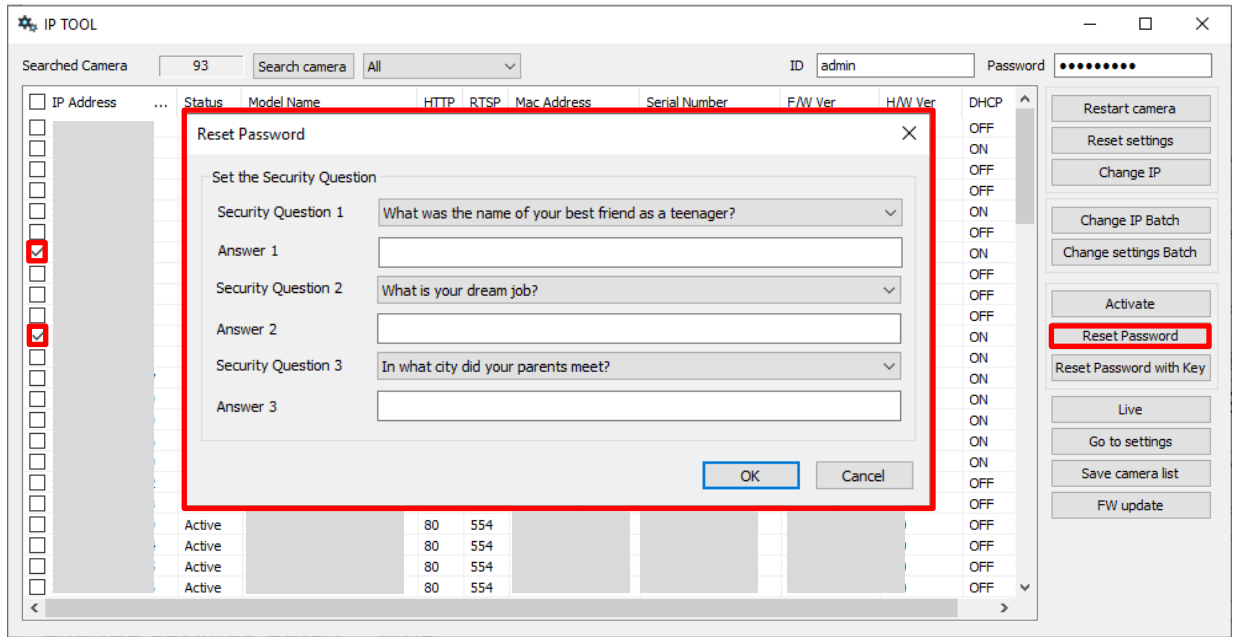
## Reset Password

1. Select cameras to reset password.
2. Click 'Reset Password'.
3. Type answers for three security questions, and click "OK" to reset password. Camera's status will be changed from 'Active' to 'Inactive'.

<Caution>

1. To use "Reset Password" function, security questions must be set. User can set security questions using IPTool or Webpage.
2. This function is not working in firmware 2.x.

\* Selectable two or more cameras at a time



\* Check the restriction by camera model

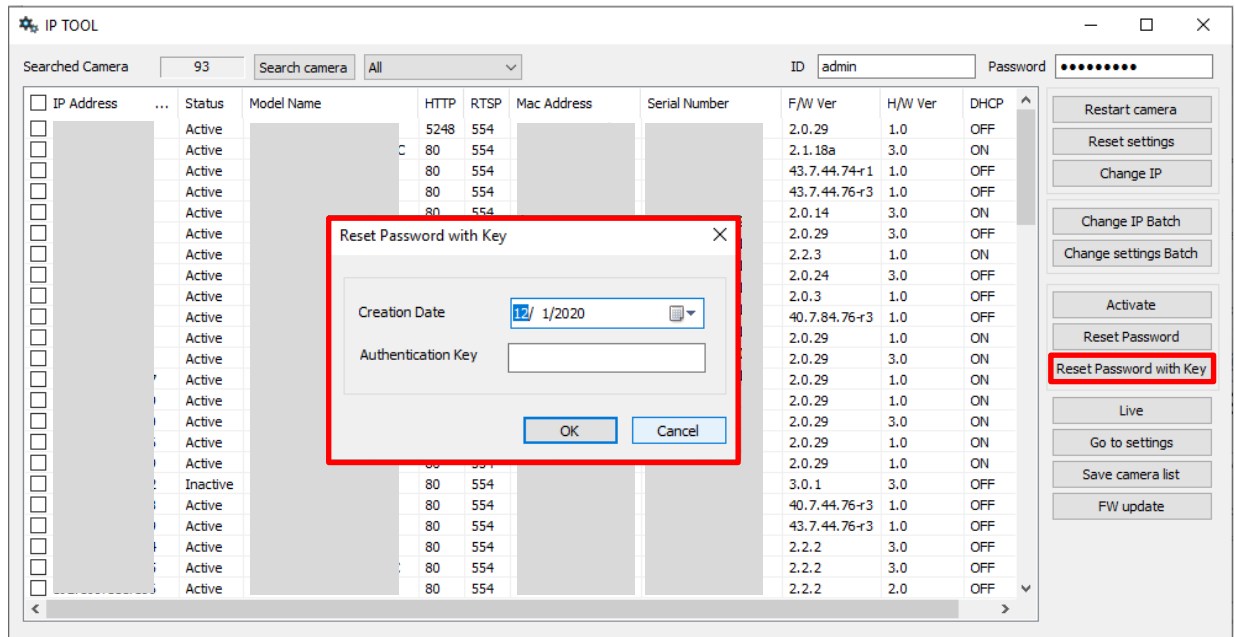
## Reset Password with Key

1. Select cameras to reset password.
2. Click 'Reset Password with Key'.
3. Type creation date and authentication key, and click "OK" to reset password. Camera's status will be changed from 'Active' to 'Inactive'.

<Caution>

1. To create an authentication key, please contact to CS.
2. This function is not working in firmware 2.x.

\* Selectable one camera at a time



\* Check the restriction by camera model

## Live

Select a camera to see the live video and click "Live". Type Admin ID and password, and click "OK". VLC media player is executed and live video will be shown.

<Note>

1. That VLC media player must be installed.
2. If the VLC media player is not installed on the PC, you can download it by visiting the VLC media player Internet installation page.
3. Please install 32bit version of VLC media Player.

\* Selectable one camera at a time

## Go to settings (Webviewer)

Select a camera and click "Go to settings". Then internet browser is executed. After log in, Webviewer of the camera will be shown.

\* Selectable one camera at a time

## Save camera list

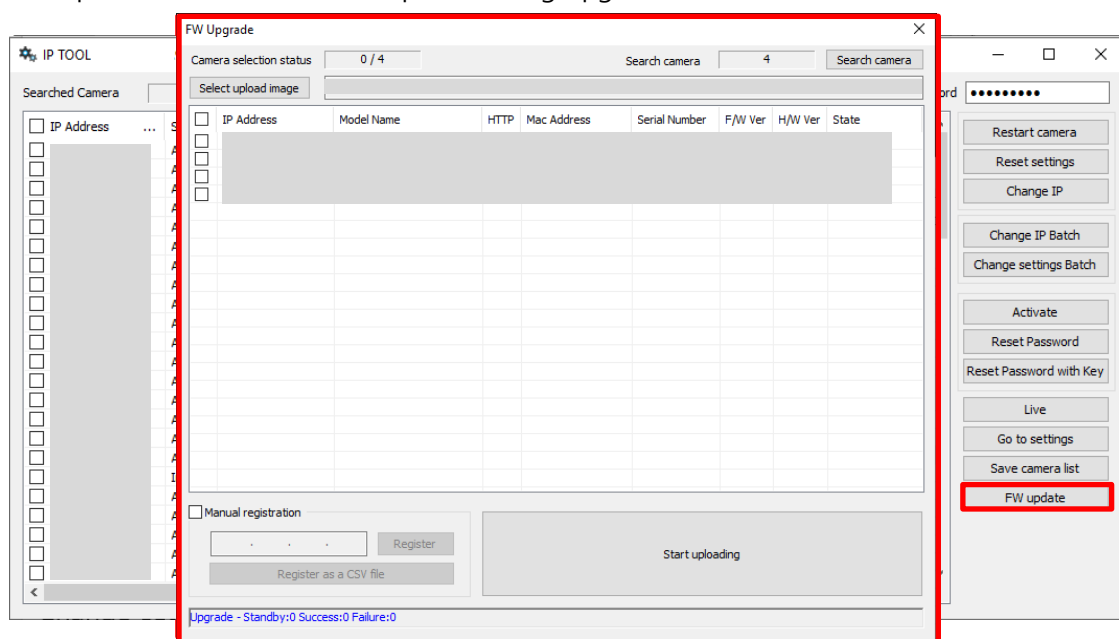
All camera list shown in IPTOOL is saved as csv file including IP address, port number, model name, MAC address, serial number and firmware version.

## FW update

1. Type ID and password.
2. Click "FW update".
3. Click "Select upload image".
4. Select firmware file (\*x.x.x.img) to upgrade and click "Open".
5. The cameras that can be upgraded by the selected FW file will be automatically discovered and displayed.
6. Select cameras which you want to upgrade.
7. Please wait for the upgrade to complete.

<Caution>

Please be sure that power of camera must keep ON during upgrade.



\* Check the restriction by camera model



The World's first certified by  
HDcctv Alliance

Premium to your **HD-CCTV**

**WEBGATE**

**WEBGATE Inc**

6F, Hanlim Venture Town B/D, 284, Gongdan-ro, Gunpo-si, Gyeonggi-do, Korea(15809)

**Technical Supports**

+82-1644-3421

[cs@webgateinc.com](mailto:cs@webgateinc.com)

**Product Inquiry**

+82-31-428-9366

[sales@webgateinc.com](mailto:sales@webgateinc.com)

**Fax**

+82-31-455-3955

[www.webgateinc.com](http://www.webgateinc.com)