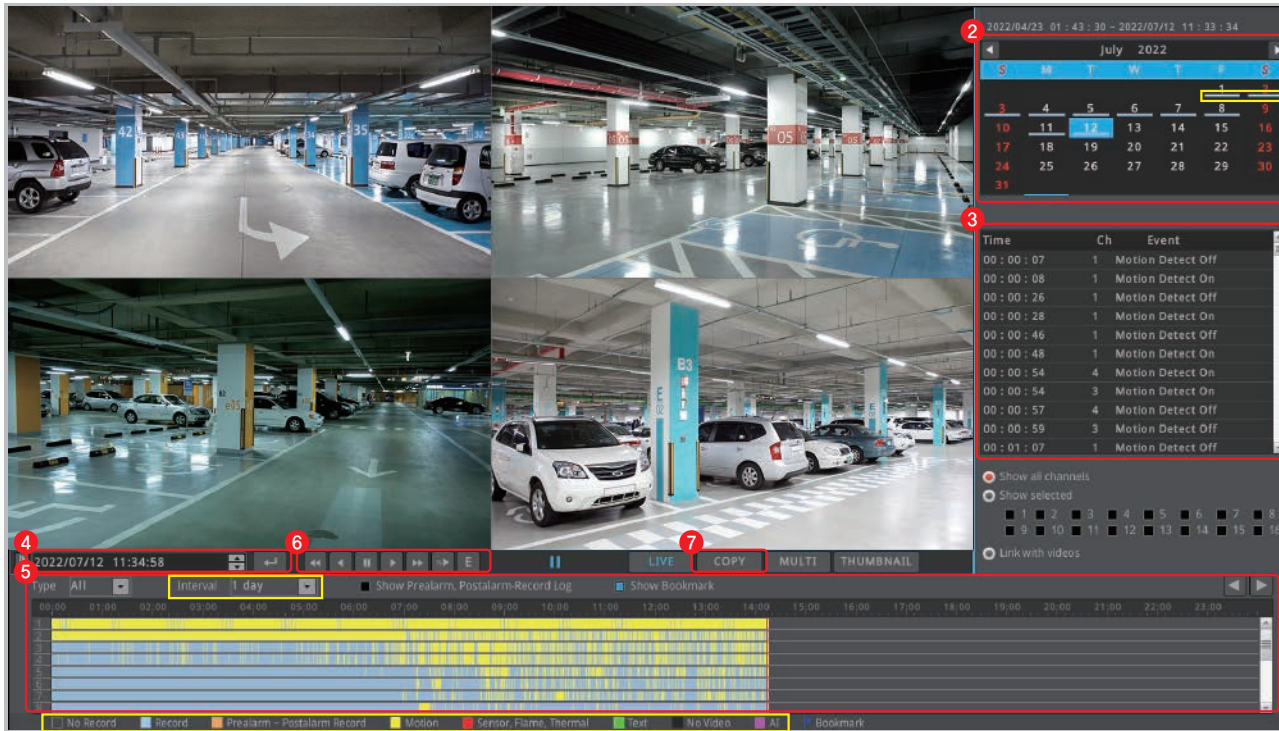


## Search & Playback



1 Click [SEARCH] button on the menu tool bar at the bottom of live view page.

### 2 Calendar search

Select a date from calendar and it moves to the date.

**tip** It marks the dates which have recording data.

### 3 Event search

Event information of the date will be displayed on log viewer.

### 4 Time search

It moves to specific time if user enter a date and time and click enter button.

### 5 Timeline search

Event history will be displayed on the timeline bar. If user clicks a position on the timeline, Recorder's playback time moves to that point.

**tip** User can choose the time interval among 10 min, 1 hour, 6 hours, 1 day from [Interval] option.

**tip** Different timeline color will be displayed based on recording or event information.



### 6 Playback

- ① ② ③ ④ ⑤ ⑥ ⑦ ⑧

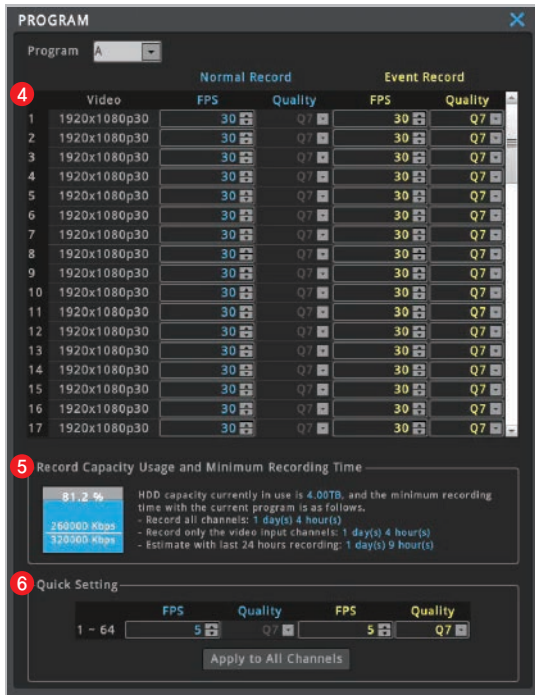
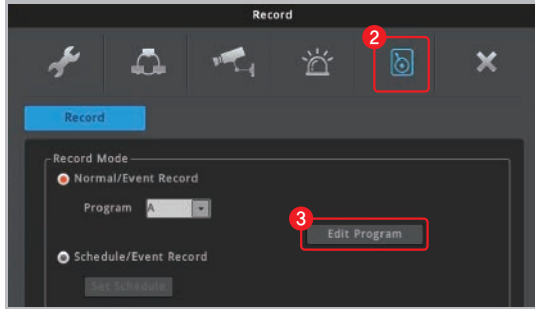



- ① **Bookmark** : Clicking bookmark moves to specific time that user set
- ② **Fast reverse playback** : 1, 2, 4, 8, 16, 32, 64 times reverse playback (If click this button at pause, it moves 1 frame reversely)
- ③ **Reverse playback** : 1x reverse playback
- ④ **Pause**
- ⑤ **Normal playback** : 1x playback
- ⑥ **Fast playback** : 1, 2, 4, 8, 16, 32, 64 times playback (If click this button at pause, it moves 1 frame forward)
- ⑦ **Slow playback** : 1/2x playback
- ⑧ **Event playback** : It only playback motion(Event) recording file.

### 7 Copy

User can copy the video file by clicking [COPY] button.  
(Refer to "Copy")

## Recording setting



- 1 Click [MENU] button on the menu bar at the bottom of the live screen.
- 2 Click Record icon [  ].
- 3 Click [Edit Program] button on the Record tab.
- 4 You can set FPS/quality of Normal recording and Event recording by clicking "Edit Program".

**tip** FPS refers to the number of frame to be recorded per second. The higher Q value, the higher the recording quality.

**tip** Generally, Normal Record is recording for motionless image and Event Record is recording for image with motion.

**tip** For efficient use of HDD, user can maximize the recording period by only using Event Record.

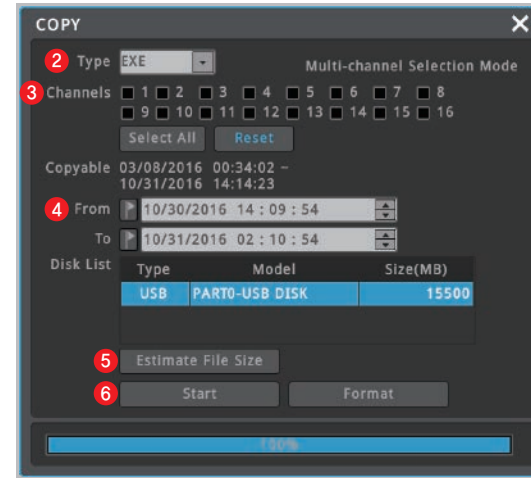
- \* Recommended setting
- Normal Record : FPS (1)
- Event Record : FPS(15)

**⚠** If the network camera does not support the FPS and quality specified in the Recording Settings menu, it applies the most similar FPS and quality that the camera can support.

Because the FPS/Quality set in the recorder may be different from the FPS/Quality of the network camera, the estimated recording period may be different from the actual recording period.

- 5 User can check the record capacity usage and minimum recording time based on the setting value.
- 6 Click [Apply to All Channels] button if you want to set all channels with same setting value.

## Copy



**⚠** Connect storage device in advance.

- 1 Click [COPY] from mouse right-click menu on live view page.
- 2 Select the format (AVI, EXE) of video to copy.
- 3 Select the channel to copy.
- 4 Select start and end time to copy.
- 5 Check the estimate file size by clicking [Estimate File Size] button.
- 6 Click [Start] button after finish all settings.

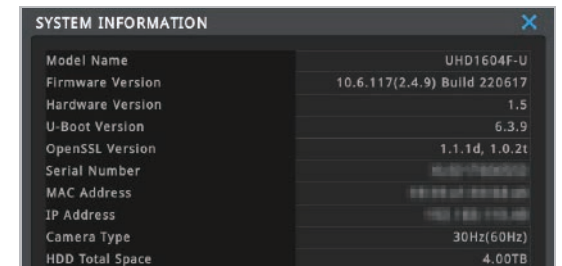
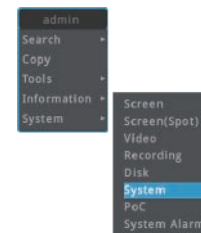
**tip** If the storage space is not enough, format the storage device by clicking [Format] button.

**⚠** Do not remove the storage device until backup complete message pops up.

**tip** Video format types

Format	Storage Device	Copy channel	Player
AVI	USB memory or external hard drive	single channel	General Media Player
EXE		multi-channel	Mini Player, Control Center Playback

## Check system information



- 1 Click [Information] – [System] from mouse right-click menu on live view page.

- 2 Recorder's system information will pop up.

**tip** User also can check screen and video information in the same menu.