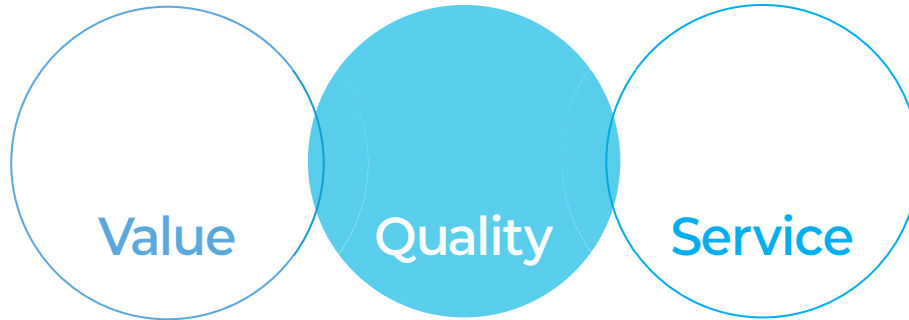


R&D-based organization with experts in image storage field

Self-development and direct production of core products from hardware to software

Differentiated customer service through professional CS team



30 Years' Experience

Self-development & Direct production

Professional CS team

No.1 Integrated Video Security Solution

WEBGATE

Company WEBGATE Inc.

Address 284 Gongdanro Gunpo, Gyeonggi-do, 15809, Korea

Establishment February, 2020
(First Established : June, 1997)

Business type Manufacturing / Construction

WEBGATE self develops, manufactures and promotes integrated video security solution including Recorder, CCTV cameras, accessories and monitoring software.

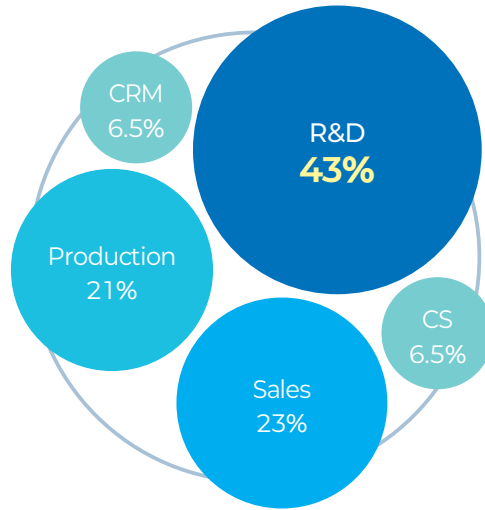
Based on its stability, reliability and technical ability accumulated during last many years in this field along with successful execution of cutting-edge defense industry projects, WEBGATE has established partnership with prominent global enterprises such as Samsung, SONY, PENTAX, BOSCH, Honeywell, and etc.

WEBGATE has possessed intensive and stable reliability by providing massive surveillance solutions to national wide resorts, government agencies, national institutions and 350 customers in 50 different countries around the world.



Overview

Webgate combines 20+ years of R&D experience with industry-leading expertise in video storage. By maintaining a premier research force, we ensure complete in-house control over hardware and software development, leading the global HD video security market with our exclusive technology.



Line up



1997~2009

- Established WEBGATE Inc.
- Released a Network Camera (WebEye product group) first time in the world
- Released an IP camera integrated DVR (i-Rec104) first time in the world
- Selected as a world top-class merchandise producer(network camera part) by Ministry of Commerce, Industry & Energy
- Selected as a world top-class merchandise production enterprise in the network camera part by Ministry of Knowledge Economy
- Released a H.264 D1 16Ch realtime DVR for the first time in the Korea

2011~2017

- Merged with Daemyung SonoSeason Co., Ltd.
- Released 16ch HD-SDI DVR first time in the world
- Won HDcctv Alliance "Compliance Leadership Award" 3 years in a row
 - Released Full-Frame 16ch DVR (built in PoC/CoC, EX-SDI, RAID)
 - Released Smart Flame Detection Camera first time in the world
- Released 8ch multiplexer (MUX08-SDI-TX/RX) first time in the world
 - Released entry level All in One DVR
- Released universal 4K DVR(UHD1604F-U) first time in the world

- Released full lineup of IP camera(NK1080 series), and NVR(UHN series)
 - EX-SDI 2.0 PoC/CoC Platform Development
 - Released 4M QHD product lineup
- Won the top prize of DVR solution at "Security Award Korea"

2018~2019

- Established WEBGATE Inc. as an independent corporation
- Released Thermal sensor integrated CCTV solution
- Acquired "Excellent Performance Certification" from Ministry of SMEs and Startups
- Won the top prize of DVR solution at "Security Award Korea" 3 years in a row
- Acquired "Certificate of Quality Certification"

2020~2021

History

2022

- Selected as a "Export Frontier Enterprise" by the Gyeonggi Provincial Government
- Awarded "\$5 million Export Tower" from Korea International Trade Association
 - Designated as an "Excellent Product" from Public Procurement Service
- Acquired "Certificate of Disaster Safety Product" from Ministry of the Interior and Safety
- Won the top prize of Fire Detection Camera solution at "Security Award Korea"

- Registration of a patent for a CCTV system for personal video information protection (Patent No. 10-2621196)
- Won the "Technology Innovation Award" at "Security Award Korea"
 - Won the "TTA certificate excellence award" from Telecommunications Technology Association
- Selected as a "excellent company" by Gunpo City
- Won the "Fire Protection Technology" category at "Merlion Awards" in Singapore

2023

- Designated as a G-PASS Company (Promising Enterprise for Entry into Overseas Public Procurement Markets)
- Selected for the Global Security TOP 100
- Winner of the Security Award Korea Grand Prize in the Solution category (Fire Detection Camera sector)

2024

- Launched a fire alert broadcasting TTS system integrated with flame-detection cameras (WATS)
- Extended designation as an Excellent Procurement Product by the Public Procurement Service
- Launched 5MP cameras applying Korea AI SoC technology (NK5100 Series)
 - Selected for the Global Security TOP 100
- Winner of the Security Award Korea Grand Prize in the Solution category (Fire Detection Camera sector)

2025

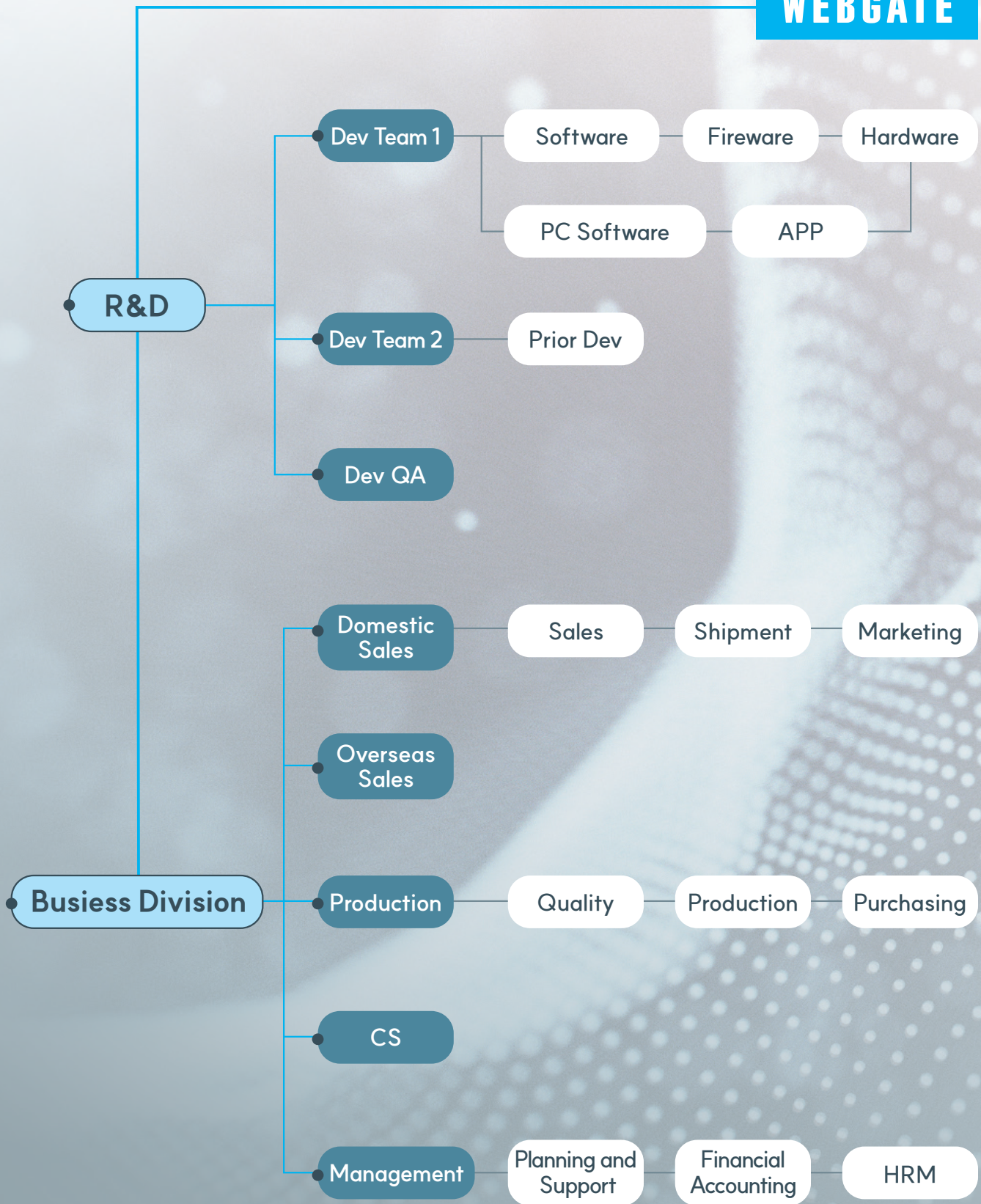
- Certified by the Telecommunications Technology Association of Korea (TTA) for 9 IP camera models
- Obtained Direct Production Certification (Electronic Display Boards)



2026

Flame detector camera approved under KFI fire safety certification (GAM26-19)

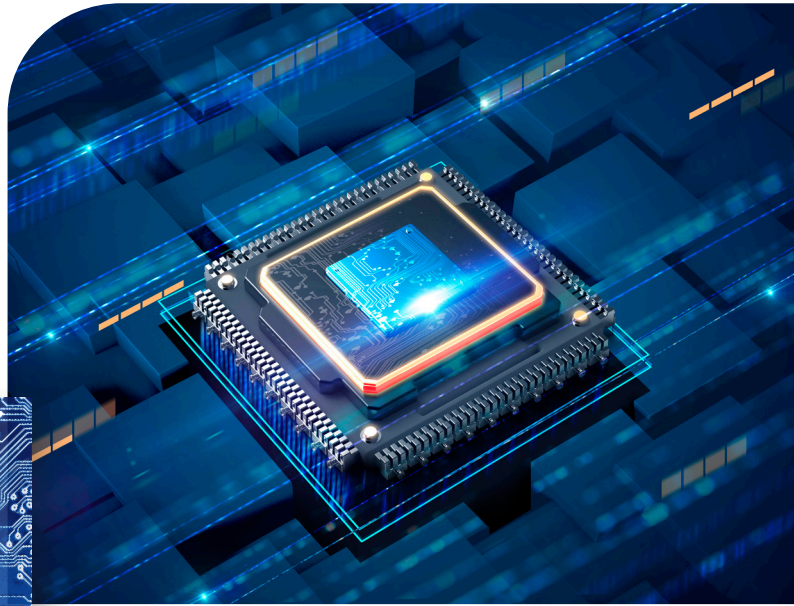
WEBGATE



Contents

P.08	Network Camera	01
P.13	Network DVR	02
P.18	Flame Detection Camera	03
P.21	Heat Detection Camera	04
P.23	AI BOX	05
P.26	EX-SDI Camera	06
P.28	EX-SDI DVR	07
P.32	PoC	08
P.36	AHD / TVI	09
P.38	Other Product	10
P.40	Software	11

Network / AI Solution



Made in **KOREA** SoC
(NK 시리즈)

KOR SoC

KOREA SoC, Self-development and direct production

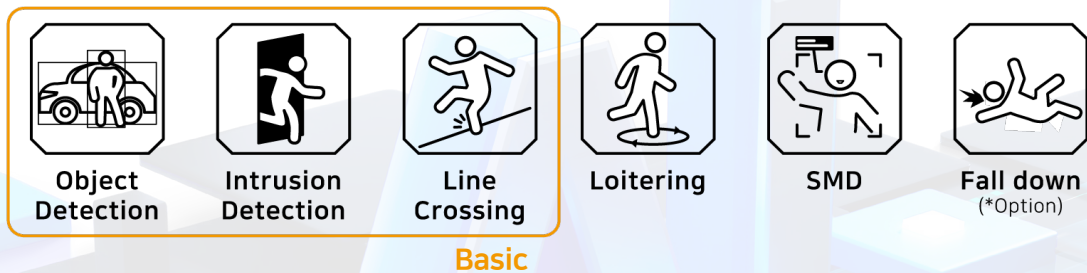
*SoC : System on Chip

AI Network Camera

- AI SoC and high sensitivity image sensor
- AI based object recognition (Human / Vehicle)
- Proven quality of Made in Korea
- AI events (Intrusion, Fall down, Line crossing and etc.)
- SMD (Smart Motion Detection) : AI based motion detection for human/vehicle



AI Feature



- NK5100 series: **Basic** + SMD, Loitering, Fall down

- NE5100, 2100 series: **Basic**

- NT4100/NT2100 PTZ series: **Basic** + Unattended baggage detection, Object removal detection, Scene change detection



○ Network Camera

- High sensitivity SONY STARVIS sensor provides crystal clear image in low light condition (NK series)
- Optimized SoC designed with Codec and high performance ISP supporting 3D-DNR, WDR and etc
- Enhanced stability with revolutionary response speed, minimum booting time, low heat generation and low power consumption

○ NVR

- Max 400Mbps high-performance recording speed
- Max 4K UHD input & recording, all channel real-time monitoring & playback simultaneously
- Compatible with various 3rd party IPCs
- Support Auto IP feature which automatically adds IPC to NVR without network set up (PoE models)



NE6110 Series

6M



Dual Light

6M



Dual Light

6M



Dual Light

6M



Dual Light

Product	NE6110BL-SIR2-AF	NE6110BL-SIR1-F2.8	NE6110ED-SIR2-AF	NE6110ED-SIR1-F2.8
Img Sensor	1/2.5" 6M CMOS	1/2.5" 6M CMOS	1/2.5" 6M CMOS	1/2.5" 6M CMOS
Lens Type	Motorized Varifocal 2.8~12mm	Fixed 2.8mm	Motorized Varifocal 2.8~12mm	Fixed 2.8mm
Min. illumination	Color: 0.008Lux@F1.6 B/W: 0Lux (IR LED On)	Color: 0.008Lux@F1.6 B/W: 0Lux (IR LED On)	Color: 0.008Lux@F1.6 B/W: 0Lux (IR LED On)	Color: 0.008Lux@F1.6 B/W: 0Lux (IR LED On)
IR Distance	40m	30m	40m	30m

NK5100 Series

KOR SoC

6M



6M



Dual Light

5M



NDA
COMPLIANT

5M



NDA
COMPLIANT

Product	NE6110VD-SIR2-AF	NE6110VD-SIR1-F2.8	NK5100BL-IR48-AF	NK5100BL-IR42-F3.6
Img Sensor	1/2.5" 6M CMOS	1/2.5" 6M CMOS	1/2.8" 5M CMOS	1/2.8" 5M CMOS
Lens Type	Motorized Varifocal 2.8~12mm	Fixed 2.8mm	Motorized Varifocal 2.7~12mm	Fixed 3.6mm
Min. illumination	Color: 0.008Lux@F1.6 B/W: 0Lux (IR LED On)	Color: 0.008Lux@F1.6 B/W: 0Lux (IR LED On)	Color: 0.02Lux@F1.3 B/W: 0Lux (IR LED On)	Color: 0.02Lux@F1.3 B/W: 0Lux (IR LED On)
IR Distance	40m	30m	60m	50m

5M



NDA
COMPLIANT

5M



NDA
COMPLIANT

5M



NDA
COMPLIANT

5M



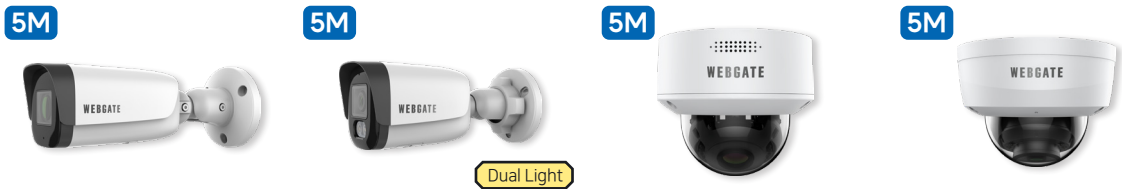
NDA
COMPLIANT

Product	NK5100D-IR30-AF	NK5100D-SIR18-AF	NK5100D-IR24-F3.6	NK5100D-F2.0
Img Sensor	1/2.8" 5M CMOS	1/2.8" 5M CMOS	1/2.8" 5M CMOS	1/2.8" 5M CMOS
Lens Type	Motorized Varifocal 2.7~12mm	Motorized Varifocal 2.7~12mm	Fixed 3.6mm	Fixed 2.0mm
Min. illumination	Color: 0.02Lux@F1.3 B/W: 0Lux (IR LED On)	Color: 0.02Lux@F1.3 B/W: 0Lux (IR LED On)	Color: 0.02Lux@F1.3 B/W: 0Lux (IR LED On)	Color: 0.02Lux@F1.3 B/W: 0.0005Lux@F1.3
IR Distance	40m	40m	30m	No IR



Product	NK5100VD-SIR6-AF	NK5100H-SIR6-AF	NK5100H-SIR6-F3.6S
Img Sensor	1/2.8" 5M CMOS	1/2.8" 5M CMOS	1/2.8" 5M CMOS
Lens Type	Motorized Varifocal 2.7~12mm	Motorized Varifocal 2.7~12mm	Fixed 3.6mm
Min. illumination	Color: 0.02Lux@F1.3 B/W: 0Lux (IR LED On)	Color: 0.02Lux@F1.3 B/W: 0Lux (IR LED On)	Color: 0.02Lux@F1.3 B/W: 0Lux (IR LED On)
IR Distance	80m	80m	80m

NE5106 Series



Product	NE5106BL-SIR4-AF	NE5106BL-SIR2-F2.8L	NE5106VD-SIR18-AF	NE5106D-SIR8-F2.8
Img Sensor	1/2.7" 5M CMOS	1/2.7" 5M CMOS	1/2.7" 5M CMOS	1/2.7" 5M CMOS
Lens Type	Motorized Varifocal 2.7~13.5mm	Fixed 2.8mm	Motorized Varifocal 2.7~13.5mm	Fixed 2.8mm
Min. illumination	Color: 0.002Lux@F1.6 B/W: 0Lux (IR LED On)	Color: 0.002Lux@F1.6 B/W: 0Lux (IR LED On)	Color: 0.002Lux@F1.6 B/W: 0Lux (IR LED On)	Color: 0.002Lux@F1.6 B/W: 0Lux (IR LED On)
IR Distance	80m	50m	30m	30m

NE5116 Series



Product	NE5116BL-SIR2-F2.8	NE5116ED-SIR2-F2.8
Img Sensor	1/2.7" 5M CMOS	1/2.7" 5M CMOS
Lens Type	Fixed 2.8mm	Fixed 2.8mm
Min. illumination	Color: 0.002Lux@F1.6 B/W: 0Lux (IR LED On)	Color: 0.002Lux@F1.6 B/W: 0Lux (IR LED On)
IR Distance	50m	30m

NE4110-PA Series



Product	NE4110BL-SIR2-AF-PA	NE4110BL-SIR2-F2.8-PA
Img Sensor	1/3" 4M CMOS	1/3" 4M CMOS
Lens Type	Motorized Varifocal 2.8~12mm	Fixed 2.8mm
Min. illumination	Color: 0.03Lux@F1.6 B/W: 0Lux (IR LED On)	Color: 0.03Lux@F1.6 B/W: 0Lux (IR LED On)
IR Distance	40m	40m

- 2
- 3
- 4
- 5
- 6
- 7
- 8
- 9
- 10
- 11

4M



4M



2M



2M



Product	NE4110ED-SIR2-AF-PA	NE4110ED-SIR2-F2.8-PA	NK2200BL-IR48-AF	NK2200BL-IR42-F3.6
Img Sensor	1/3" 4M CMOS	1/3" 4M CMOS	1/2.8" 2M CMOS	1/2.8" 2M CMOS
Lens Type	Motorized Varifocal 2.8~12mm	Fixed 2.8mm	Motorized Varifocal 2.8~13.5mm	Fixed 3.6mm
Min. illumination	Color: 0.03Lux@F1.6 B/W: 0Lux (IR LED On)	Color: 0.03Lux@F1.6 B/W: 0Lux (IR LED On)	Color: 0.02Lux@F1.3 B/W: 0Lux (IR LED On)	Color: 0.02Lux@F1.3 B/W: 0Lux (IR LED On)
IR Distance	40m	40m	60m	50m

2M



2M



2M



2M



Product	NK2200D-SIR18-AF	NK2200D-IR24-F2.8	NK2200D-F2.0	NK2200H-SIR6-AF
Img Sensor	1/2.8" 2M CMOS	1/2.8" 2M CMOS	1/2.8" 2M CMOS	1/2.8" 2M CMOS
Lens Type	Motorized Varifocal 2.8~13.5mm	Fixed 2.8mm	Fixed 2.0mm	Motorized Varifocal 2.8~13.5mm
Min. illumination	Color: 0.02Lux@F1.3 B/W: 0Lux (IR LED On)	Color: 0.02Lux@F1.3 B/W: 0Lux (IR LED On)	Color: 0.02Lux@F1.3 B/W: 0.0005Lux@F1.3	Color: 0.02Lux@F1.3 B/W: 0Lux (IR LED On)
IR Distance	30m	30m	No IR	80m

2M



2M

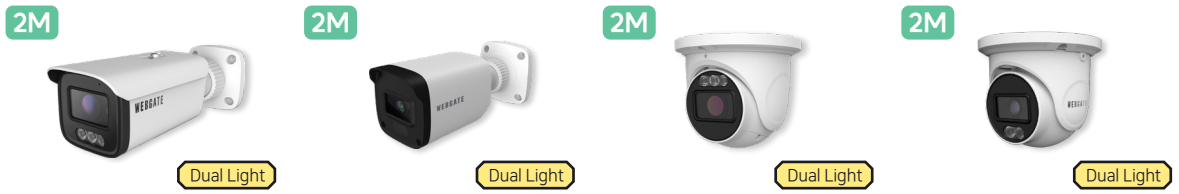


2M



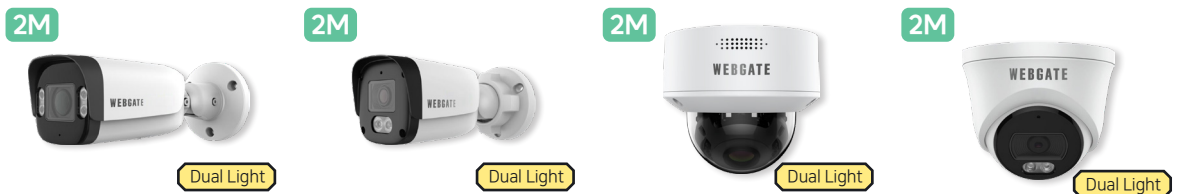
Product	NK2200H-SIR6-F3.6S	NK2200H-SIR12-F550-LPR	NK2200SH-F3.6
Img Sensor	1/2.8" 2M CMOS	1/2.8" 2M CMOS	1/2.8" 2M CMOS
Lens Type	Fixed 3.6mm	Varifocal 5~50mm	Fixed 3.6mm
Min. illumination	Color: 0.02Lux@F1.3 B/W: 0Lux (IR LED On)	Color: 0.02Lux@F1.3 B/W: 0Lux (IR LED On)	Color: 0.02Lux@F1.3 B/W: 0.0005Lux@F1.3
IR Distance	80m	120m	No IR

NE2110 Series



Product	NE2110BL-SIR2-AF	NE2110BL-SIR1-F2.8	NE2110ED-SIR2-AF	NE2110ED-SIR1-F2.8
Img Sensor	1/2.8" 2M CMOS	1/2.8" 2M CMOS	1/2.8" 2M CMOS	1/2.8" 2M CMOS
Lens Type	Motorized Varifocal 2.8~12mm	Fixed 2.8mm	Motorized Varifocal 2.8~12mm	Fixed 2.8mm
Min. illumination	Color: 0.006Lux@F1.4 B/W: 0Lux (IR LED On)	Color: 0.006Lux@F1.4 B/W: 0Lux (IR LED On)	Color: 0.008Lux@F1.6 B/W: 0Lux (IR LED On)	Color: 0.008Lux@F1.6 B/W: 0Lux (IR LED On)
IR Distance	40m	30m	40m	30m

NE2116 Series



Product	NE2116BL-SIR4-AF	NE2116BL-SIR2-F2.8	NE2116VD-SIR18-AF	NE2116ED-SIR2-F2.8
Img Sensor	1/2.8" 2M CMOS	1/3" 2M CMOS	1/2.8" 2M CMOS	1/3" 2M CMOS
Lens Type	Motorized Varifocal 2.7~13.5mm	Fixed 2.8mm	Motorized Varifocal 2.7~13.5mm	Fixed 2.8mm
Min. illumination	Color: 0.002Lux@F1.6 B/W: 0Lux (IR LED On)	Color: 0.02Lux@F2.0 B/W: 0Lux (IR LED On)	Color: 0.002Lux@F1.6 B/W: 0Lux (IR LED On)	Color: 0.02Lux@F2.0 B/W: 0Lux (IR LED On)
IR Distance	80m	50m	30m	30m

NT-PTZ Series



Product	NT4100PT-IR-Z25W	NT4100PT-IR-Z37W	NT2100PT-IR-Z25W
Img Sensor	1/2.7" 4M CMOS	1/1.8" 4M CMOS	1/2.8" 2M CMOS
Lens Type	Motorized Varifocal 4.8~120mm(25x Optical)	Motorized Varifocal 5.6~208mm(37x Optical)	Motorized Varifocal 4.8~120mm(25x Optical)
Min. illumination	Color: 0.01Lux@F1.6 B/W: 0Lux (IR LED On)	Color: 0.005Lux@F1.5 B/W: 0Lux (IR LED On)	Color: 0.00125Lux@F1.65 B/W: 0Lux (IR LED On)
IR Distance	160m	500m	300m

NE-PTZ Series

2M



2M



Product	NE2100PT-IR-Z15	NE2100PT-IR-Z32
Img Sensor	1/2.8" 2M CMOS	1/2.8" 2M CMOS
Lens Type	Motorized Varifocal 5~75mm(15x Optical)	Motorized Varifocal 4.8~154mm(32x Optical)
Min. illumination	Color: 0.002Lux@F1.65 B/W: 0Lux (IR LED On)	Color: 0.00125Lux@F1.65 B/W: 0Lux (IR LED On)
IR Distance	200m	300m

UHN Series

64ch



36ch



64ch



Product	UHN6400-H6R	UHN3600-H6R	UHN6400-H16S
Video	Input: 64CH IP Output: 1 HDMI, 1 VGA, 1 CVBS	Input: 36CH IP Output: 1 HDMI, 1 VGA, 1 CVBS	Input: 64CH IP Output: 2 HDMI, 1 VGA
Resolution	704×480 ~ 4K	704×480 ~ 4K	704×480 ~ 4K
Recording Bandwidth	400Mbps	320Mbps	400Mbps
Protocol	WESP, Onvif	WESP, Onvif	WESP, Onvif
Network port	2 Gigabit Ethernet(LAN/WAN)	2 Gigabit Ethernet(LAN/WAN)	2 Gigabit Ethernet(LAN/WAN)
Audio	Input: 1 RCA Output: 1 HDMI, 1 RCA	Input: 1 RCA Output: 1 HDMI, 1 RCA	Input: 1 RCA Output: 1 HDMI, 1 RCA
HDD	6 SATA, 1 eSATA	6 SATA, 1 eSATA	16 SATA, 1 eSATA
Dimension	445×418×88mm, 5.46kg	445×418×88mm, 5.46kg	437×483×143mm, 10.06kg

64ch



36ch



16ch



NDA
COMPLIANT

Product	UHN6400-H8-V3	UHN3600-H8-V3	UHN1616P-H2-V3
Video	Input: 64CH IP Output: 2 HDMI, 1 VGA, 1 CVBS	Input: 36CH IP Output: 2 HDMI, 1 VGA, 1 CVBS	Input: 16CH IP Output: 1 HDMI, 1 VGA
Resolution	704×480 ~ 4K	704×480 ~ 4K	704×480 ~ 4K
Recording Bandwidth	400Mbps	320Mbps	96Mbps
Protocol	WESP, Onvif	WESP, Onvif	WESP, Onvif
Network port	2 Gigabit Ethernet(LAN/WAN)	2 Gigabit Ethernet(LAN/WAN)	16 PoE(LAN) 1 Gigabit Ethernet(LAN/WAN)
Audio	Input: 1 RCA Output: 1 HDMI, 1 RCA	Input: 1 RCA Output: 1 HDMI, 1 RCA	Input: 1 RCA Output: 1 HDMI, 1 RCA
HDD	8 SATA, 2 eSATA	8 SATA, 2 eSATA	2 SATA
Dimension	445×436×90mm, 5.7kg	445×436×90mm, 5.7kg	378×317×51mm, 2.3kg

1

02

Network NVR

3

4

5

6

7

8

9

10

11

8ch



NDA
 COMPLIANT

4ch



NDA
 COMPLIANT

Product	UHN808P-H1-V3	UHN404P-H1-V3
Video	Input: 8채널 IP Output: 1 HDMI, 1 VGA	Input: 4채널 IP Output: 1 HDMI, 1 VGA
Resolution	704×480 ~ 4K	704×480 ~ 4K
Recording Bandwidth	80Mbps	40Mbps
Protocol	WESP, Onvif	WESP, Onvif
Network port	8 PoE(LAN) 1 Gigabit Ethernet(LAN/WAN)	4 PoE(LAN) 1 Fast Ethernet(LAN/WAN)
Audio	Input: 1 RCA Output: 1 HDMI, 1 RCA	Input: 1 RCA Output: 1 HDMI, 1 RCA
HDD	1 SATA	1 SATA
Dimension	300×209×49mm, 1.1kg	300×209×49mm, 1kg

WEBGATE

1

02

Network NVR

3

4

5

6

7

8

9

10

11

Fire Prevention Solution

WEBGATE's smart flame detection camera, with WEBGATE's specialized AI technology and a dedicated flame detection sensor, accurately detects fire flame and smoke to help suppressing fire at its early stage.



○ Intelligent Flame Detection CCTV Camera

✓ Advanced fire detection performance

Quick and accurate detection by specialized AI technology and a dedicated flame detection IR sensor

NK2200-F1&F2		NK2100-F1&F2 / NK5100-F1&F2				
						
Dedicated Flame Detection Sensor	Intrusion Detection	Line Crossing	Loitering	SMD	Fall down (*Option)	Smoke-AI (*Separate License)

Basic

✓ Applicable to weld, smoke and dust environments

Applicable to weld, smoke and dust environments where UV sensor type devices cannot identify

✓ Minimized false alarms with optimized setting

Optimized to various environments with precise sensitivity control and detection time setting

✓ Real-time fire check

Real-time check for fire scene and malfunctioning of device through live view and flame detecting gauge



✓ **Accurate results in indoor/outdoor environments**

Webgate's specialized technology overcomes physical limitations of IR sensors which can generate false alarm

✓ **Various types of housing**

Ex-proof, bullet, dome type line up for a wide range of industrial sites



Fire Detection Footage

✓ **Expanded industrial safety solution**

AI deep learning engine provides intrusion, worker fall detection and etc. for industrial safety



Quick detection

Detect momentary ignition, explosion in 1 second



Real-time notification

Live alert to CMS and Mobile App



Compatibility

Compatible with various firefighting equipment



High accuracy

Dedicated Flame detection sensor



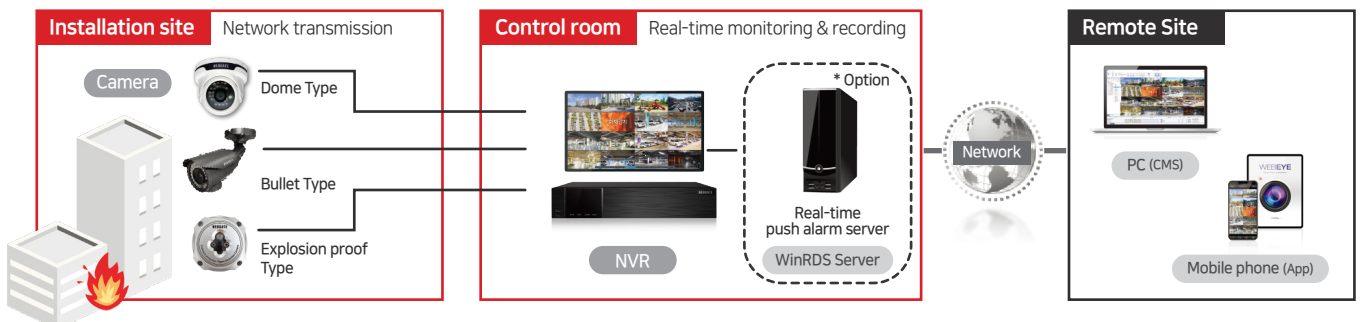
AI technology

Intrusion and fall detection through deep learning algorithm



All in one CCTV

Video surveillance and fire prevention simultaneously



NK5100 Series

5M



NDA
COMPLIANT

5M



NDA
COMPLIANT

5M



NDA
COMPLIANT

Product	NK5100BL-AF-F2	NK5100ED-F2	NK5100ED-F1
Detection Method	Flame IR sensor (2)	Flame IR sensor (2)	Flame IR sensor (1)
Img Sensor	1/2.8" 5M CMOS	1/2.8" 5M CMOS	1/2.8" 5M CMOS
Lens Type	Motorized Varifocal 2.7~12mm	Fixed 2.7~12mm	Fixed 2.8mm
Min. illumination	Color: 0.02Lux@F1.3 B/W: 0Lux (IR LED On)	Color: 0.02Lux@F1.3 B/W: 0Lux (IR LED On)	Color: 0.02Lux@F1.3 B/W: 0Lux (IR LED On)
Distance & Angle	30M / 100°	30M / 100°	30M / 100°

NK2100 Series

2M



NDA
COMPLIANT

2M



NDA
COMPLIANT

2M



NDA
COMPLIANT

2M



NDA
COMPLIANT

Product	NK2100BL-AF-F2	NK2100BL-F1	NK2100ED-F1	JDG-I3-NK2100EX-F2
Detection Method	Flame IR sensor (2)	Flame IR sensor (1)	Flame IR sensor (1)	Flame IR sensor (2)
Img Sensor	1/2.8" 2M CMOS	1/2.8" 2M CMOS	1/2.8" 2M CMOS	1/2.8" 2M CMOS
Lens Type	Motorized Varifocal 2.7~12mm	Fixed 2.8mm	Fixed 3.6mm	Fixed 3.6mm
Min. illumination	Color: 0.02Lux@F1.3 B/W: 0Lux (IR LED On)	Color: 0.02Lux@F1.3 B/W: 0Lux (IR LED On)	Color: 0.02Lux@F1.3 B/W: 0Lux (IR LED On)	Color: 0.02Lux@F1.3 B/W: 0Lux (IR LED On)
Distance & Angle	30M / 100°	30M / 100°	30M / 100°	30M / 100°

NK2200 Series

2M



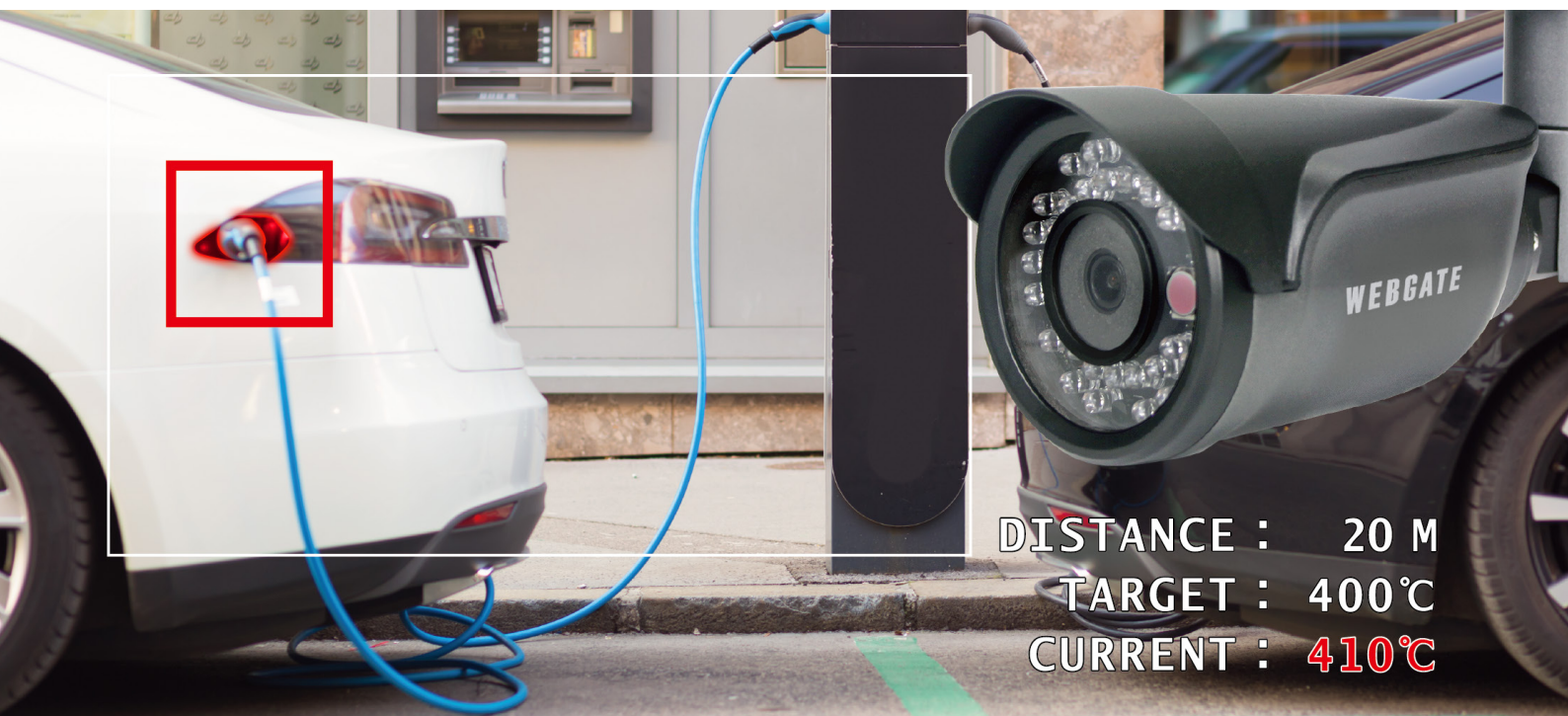
NDA
COMPLIANT

2M



NDA
COMPLIANT

Product	NK2200BL-F2	NK2200ED-F1
Detection Method	Flame IR sensor (2)	Flame IR sensor (1)
Img Sensor	1/2.8" 2M CMOS	1/2.8" 2M CMOS
Lens Type	Fixed 2.8mm	Fixed 2.8mm
Min. illumination	Color: 0.02Lux@F1.3 B/W: 0Lux (IR LED On)	Color: 0.02Lux@F1.3 B/W: 0Lux (IR LED On)
Distance & Angle	30M / 100°	30M / 100°



Heat Detection Camera



Thermal Detection Sensor

Max. 450°C detection

Special Glass

Maximize thermal transmittance and sensor sensitivity

WEBGATE's Thermal Detection Sensor are Heat detection

up to 450°C. Maximize thermal transmittance and sensor sensitivity by applying thermal sensor with special glass. Detecting object's temperature and high-definition live monitoring at the same time.

Camera sends push alarm to DVR(NVR) and PC(CMS) when it detects abnormal temperature. Applicable on heat sensitive devices & facilities and unmanned factories in a diverse industry.

Smart Heat Detection CCTV Camera

- The most optimized heat detection CCTV solution for EV charging station, data center, unmanned factories and etc
- Embedded thermal sensor for heat detection up to 450°C
- Special glass for long range detection
- Push alarm to DVR(NVR), PC(CMS) and smart phone

NK5100



KOR SoC



5M



Product	NK5100BL-T450
Sensor	FLIR Thermal Sensor
Detection Degree	20°C ~ 450°C
Img Sensor	1/2.8" 5M CMOS
Lens Type	Fixed 4mm
Min. illumination	Color: 0.02Lux@F1.3 B/W: 0Lux (IR LED On)
Detection Area	Up to 6 Zones

1

2

3

04

Heat Detection Camera

5

6

7

8

9

10

11

AI BOX



AI BOX

- AI BOX provides analyzed images and alarms to VMS and NVR by deep learning analysis of CCTV images.
- It provides various solutions throughout more than 40 types of AI apps such as behavioral pattern analysis, store, safety, intrusion management.
- vehicle control and fire management and so on and two or more complex rules can be applied simultaneously to one channel.

Edge Computing AI

- Minimal server burden and real-time signal processing by Edge device.
- Low latency compared to central signal processing method
- Less risk of hacking with local network services
- reduce cost and power consumption

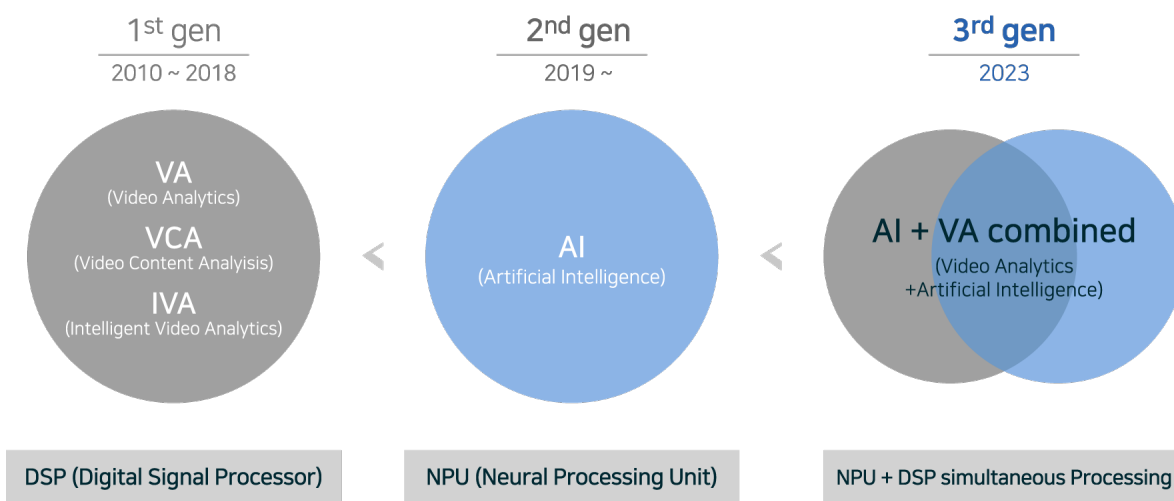
Advanced false alarm filter

AI BOX is applied with an Advanced multi-stage false alarm filter that filters the factors that cause the false alarm to prevent it from repeating when the false alarm occurs repeatedly due to shaking, reflection, or changing the tracking ID with an adjacent object.

3rd Generation Intelligent CCTV

· AI deep-learning alone can not reduce misrecognition. With 3rd generation technology, AI BOX can provide accurate detection than other AI solution.


- 1st gen : DSP (Digital Signal Processor)
- 2nd gen : NPU (Neural Processing Unit)
- 3rd gen : Hybrid Intelligent Technology that Combines Deep Learning AI with Video Analysis to process DSP and NPU simultaneously



AI Box Series



Product	AIBOX-B404B	AIBOX-B808B
Function & Channel	AI Video Analysis Server / IP 4CH	AI Video Analysis Server / IP 8CH
Supported Input Video Format	H.265 / H.264	H.265 / H.264
Max. Video Input resolution	4K@30fps (2M @120fps)	4K@60fps (2M @240fps)
Video Input Method	RTSP, RTSP over HTTP/S, Onvif	RTSP, RTSP over HTTP/S, Onvif
Video Output Stream Method	RTSP over TCP/UDP, RTSP over Websocket, RTSP over HTTP/S	RTSP over TCP/UDP, RTSP over Websocket, RTSP over HTTP/S
Audio Input	1 x Audio Line-In	1 x Audio Line-In
Relay Output	1CH, Dry contact Relay	1CH, Dry contact Relay
AI Application	Intrusion detection, zone counting and a total of 69 APPs	Intrusion detection, zone counting and a total of 69 APPs



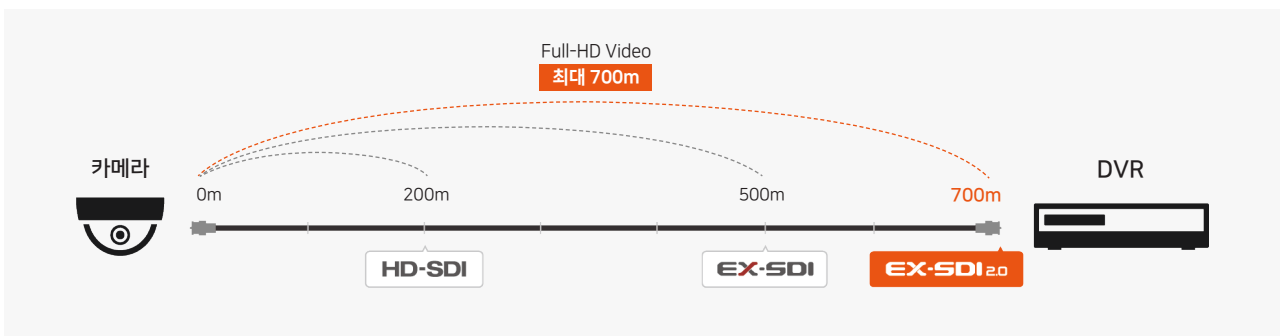
Please refer to the corresponding QR code for checking all ai application list.

EX-SDI Solution



EX-SDI Camera

- EX-SDI is enhanced technology of HD-SDI to extend the transmission distance without image deterioration through VLC(Visually Lossless Codec)
- EX-SDI 2.0 can transmit the Full-HD image up to 700m through coaxial cable(5C-HFBT)
- High sensitivity SONY STARVIS sensor provides crystal clear image in low light condition
- Proven quality of Made in Korea and reasonable price





○ ALL-HYBRID DVR

- The Universal DVR is the optimum solution for any site, any camera
- From SD to UHD, including IPC, the Universal DVR support all kinds of video formats



Product Category	Video Format	IP	Analog			Digital		
		ONVIF WESP	CVBS	TVI	AHD	HD-SDI	EX-SDI	EX-SDI TDM
ALL-HYBRID DVR		<i>Support all kinds of video formats from Analog to EX-SDI, including 4K IP</i>						
Digital HD DVR						Digital HD		
Analog HD DVR			Analog SD / HD					
NVR		IP						

K4000 Series **KOR SoC**

5M



5M



5M



5M



Product	K4000BL-IR48-AF	K4000BL-IR42-F3.6	K4000D-SIR18-AF	K4000D-IR24-F3.6
Img Sensor	1/2.8" 5M CMOS	1/2.8" 5M CMOS	1/2.8" 5M CMOS	1/2.8" 5M CMOS
Lens Type	Motorized Varifocal	Fixed	Motorized Varifocal	Fixed
	2.7~12mm	3.6mm	2.7~12mm	3.6mm
Min. illumination	Color: 0.02Lux@F1.3	Color: 0.02Lux@F1.3	Color: 0.02Lux@F1.3	Color: 0.02Lux@F1.3
	B/W: 0Lux (IR LED On)	B/W: 0Lux (IR LED On)	B/W: 0Lux (IR LED On)	B/W: 0Lux (IR LED On)
IR Distance	60m	50m	40m	30m

5M



5M



5M



5M



Product	K4000D-F2.8	K4000VD-SIR18-AF	K4000H-IR100-AF	K4000H-IR100-F3.6S
Img Sensor	1/2.8" 5M CMOS	1/2.8" 5M CMOS	1/2.8" 5M CMOS	1/2.8" 5M CMOS
Lens Type	Fixed	Motorized Varifocal	Motorized Varifocal	Fixed
	2.8mm	2.7~12mm	2.7~12mm	3.6mm
Min. illumination	Color: 0.02Lux@F1.3	Color: 0.02Lux@F1.3	Color: 0.02Lux@F1.3	Color: 0.02Lux@F1.3
	B/W: 0.0005Lux@F1.3	B/W: 0Lux (IR LED On)	B/W: 0Lux (IR LED On)	B/W: 0Lux (IR LED On)
IR Distance	No IR	45m	80m	80m

K1080 Series **KOR SoC**

2M



2M



2M



2M



Product	K1080BL-IR48	K1080BL-IR36-F3.6	K1080D-SIR18	K1080D-IR24-F3.6
Img Sensor	1/2.8" 2M CMOS	1/2.8" 2M CMOS	1/2.8" 2M CMOS	1/2.8" 2M CMOS
Lens Type	Varifocal 2.7~12mm	Fixed 3.6mm	Varifocal 2.8~12mm	Fixed 3.6mm
Min. illumination	Color: 0.02Lux@F1.3 B/W: 0Lux (IR LED On)	Color: 0.02Lux@F1.3 B/W: 0Lux (IR LED On)	Color: 0.02Lux@F1.3 B/W: 0Lux (IR LED On)	Color: 0.02Lux@F1.3 B/W: 0Lux (IR LED On)
IR Distance	60m	45m	40m	30m

2M



2M



2M



2M



Product	K1080D-IR24-F2.8	K1080D-F2.8	K1080D-F2.0	K1080H-IR100-F550
Img Sensor	1/2.8" 2M CMOS	1/2.8" 2M CMOS	1/2.8" 2M CMOS	1/2.8" 2M CMOS
Lens Type	Fixed 2.8mm	Fixed 2.8mm	Fixed 2.0mm	Varifocal 5~50mm
Min. illumination	Color: 0.02Lux@F1.3 B/W: 0Lux (IR LED On)	Color: 0.02Lux@F1.3 B/W: 0.0005Lux@F1.3	Color: 0.02Lux@F1.3 B/W: 0.0005Lux@F1.3	Color: 0.02Lux@F1.3 B/W: 0Lux (IR LED On)
IR Distance	30m	No IR	No IR	80m

2M



2M



2M



Product	K1080H-IR100-F3.6S	K1080SH-F3.6C	K1080H-SIR12-F550-LPR
Img Sensor	1/2.8" 2M CMOS	1/2.8" 2M CMOS	1/2.8" 2M CMOS
Lens Type	Fixed 3.6mm	Fixed 3.6mm	Varifocal 5~50mm
Min. illumination	Color: 0.02Lux@F1.3 B/W: 0Lux (IR LED On)	Color: 0.02Lux@F1.3 B/W: 0.0005Lux@F1.3	Color: 0.02Lux@F1.3 B/W: 0Lux (IR LED On)
IR Distance	80m	No IR	160m

- 1
- 2
- 3
- 4
- 5
- 06
- EX-SDI Camera
- 7
- 8
- 9
- 10
- 11

UHD Series

16ch



16ch



8ch



Product	UHD1608F-UR-V3	UHD1608F-U-V3	UHD804F-U-V3
Video	Input: 16CH Output: 1 HDMI, 1 VGA, 1 CVBS	Input: 16CH Output: 1 HDMI, 1 VGA, 1 CVBS	Input: 8CH Output: 1 HDMI, 1 VGA, 1 CVBS
Max. Resolution	HD-SDI(2MP), EX-SDI(4K), EX-SDI TDM(2MP), AHD(4K), TVI(4K), CVBS(960H), Network Camera (4K)	HD-SDI(2MP), EX-SDI(4K), EX-SDI TDM(2MP), AHD(4K), TVI(4K), CVBS(960H), Network Camera (4K)	HD-SDI(2MP), EX-SDI(4K), EX-SDI TDM(2MP), AHD(4K), TVI(4K), CVBS(960H), Network Camera (4K)
Frame Rate	Max. 480fps@2MP, 480fps@4MP, 240fps@4K	Max. 480fps@2MP, 480fps@4MP, 240fps@4K	Max. 240fps@2MP, 240fps@4MP, 120fps@4K
Protocol	HD-SDI, EX-SDI, EX-SDI TDM, AHD, TVI, CVBS, Network Camera(WESP, ONVIF)	HD-SDI, EX-SDI, EX-SDI TDM, AHD, TVI, CVBS, Network Camera(WESP, ONVIF)	HD-SDI, EX-SDI, EX-SDI TDM, AHD, TVI, CVBS, Network Camera(WESP, ONVIF)
Compression	H.265, H.264, MJPEG	H.265, H.264, JPEG	H.265, H.264, MJPEG
Network port	1 Gigabit Ethernet(LAN/WAN)	1 Gigabit Ethernet(LAN/WAN)	1 Gigabit Ethernet(LAN/WAN)
Audio	Input: 8 RCA Output: 1 HDMI, 1 RCA	Input: 8 RCA Output: 1 HDMI, 1 RCA	Input: 4 RCA Output: 1 HDMI, 1 RCA
HDD	5 SATA, 1 eSATA	5 SATA, 1 eSATA	2 SATA, 1 eSATA
Dimension	445×418×88mm, 6.1kg	445×418×88mm, 6.1kg	378×317×51mm, 2.35kg

HDC Series

4ch



4ch



Product	UHD402F-U-V3	HDC442F-D-V3
Video	Input: 4CH Output: 1 HDMI, 1 VGA, 1 CVBS	Input: 4CH Output: 1 HDMI, 1 VGA
Max. Resolution	HD-SDI(2MP), EX-SDI(4K), EX-SDI TDM(2MP), AHD(4MP), TVI(4MP), CVBS(960H), Network Camera(4K)	HD-SDI(2MP), EX-SDI(4MP), EX-SDI TDM(2MP), Network Camera(4K)
Frame Rate	Max. 120fps@2MP, 120fps@4MP, 60fps@4K	Max. 120fps@2MP, 120fps@4MP
Protocol	HD-SDI, EX-SDI, EX-SDI TDM, AHD, TVI, CVBS, Network Camera(WESP, ONVIF)	HD-SDI, EX-SDI, EX-SDI TDM, Network Camera(WESP, ONVIF)
Compression	H.265, H.264, MJPEG	H.265, H.264, MJPEG
Network port	1 Fast Ethernet(LAN/WAN)	1 Fast Ethernet(LAN/WAN)
Audio	Input: 4 RCA Output: 1 HDMI, 1 RCA	Input: - Output: 1 HDMI
HDD	2 SATA, 1 eSATA	1 SATA
Dimension	378×317×51mm, 2.2kg	260×241×45mm, 1.2kg

WEBGATE

1

2

3

4

5

6

07

EX-SDI DVR

8

9

10

11

PoC Solution



○ Installation time

- 30% faster than general cameras
- No need to install power cable and hsbox
- Minimize perforation on the exterior of the building as there's no need to install power box

○ Surge Protection

- 50% better than general products
- Minimize surge problem from potential difference
- Satisfy the Class3 (2kv) level of international standard on surge immunity (IEC 61000-4-5)

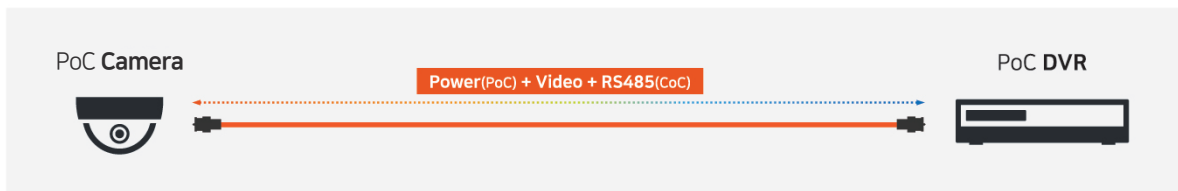
○ Intelligent outage recovery

- IPFR(Intelligent Power Failure Recovery) technology
- HDD controllable SMPS and protection circuit even under power lost

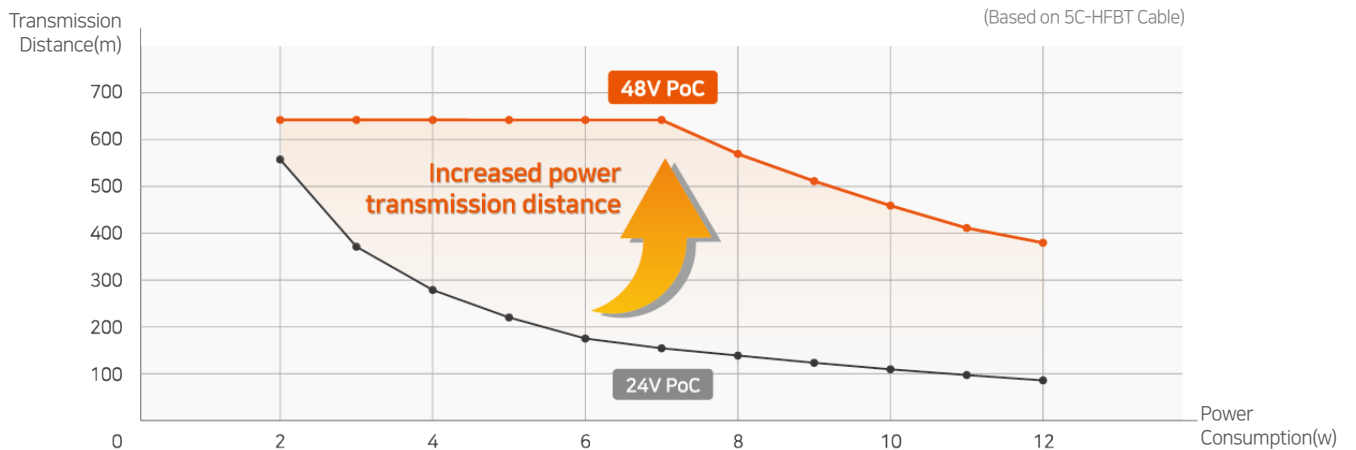


One Cable Solution

- **PoC**(Power over Coax) : Only one Coax Cable is required to supply power. Do not require any power line.
- **CoC**(Control over Coax) : Only one Coax Cable is required to control camera. Do not require RS485 line.



48V PoC Increased power transmission distance



KT1080P Series *Analog

2M



2M



2M



2M



Product	KT1080PBL-IR48	KT1080PD-SIR18	KT1080PVD-SIR18	KT1080PB
Img Sensor	1/2.8" 2M CMOS	1/2.8" 2M CMOS	1/2.8" 2M CMOS	1/2.8" 2M CMOS
Lens Type	Varifocal 2.7~12mm	Varifocal 2.8~12mm	Varifocal 2.8~12mm	Option C/CS Mount
Min. illumination	0.02Lux@F1.3 0Lux (IR LED On)	0.02Lux@F1.3 0Lux (IR LED On)	0.02Lux@F1.3 0Lux (IR LED On)	0.02Lux@F1.3 0.0005Lux@F1.3
IR Distance	60m	40m	30m	No IR

WEBGATE

1

2

3

4

5

6

7

08

POC

9

10

11

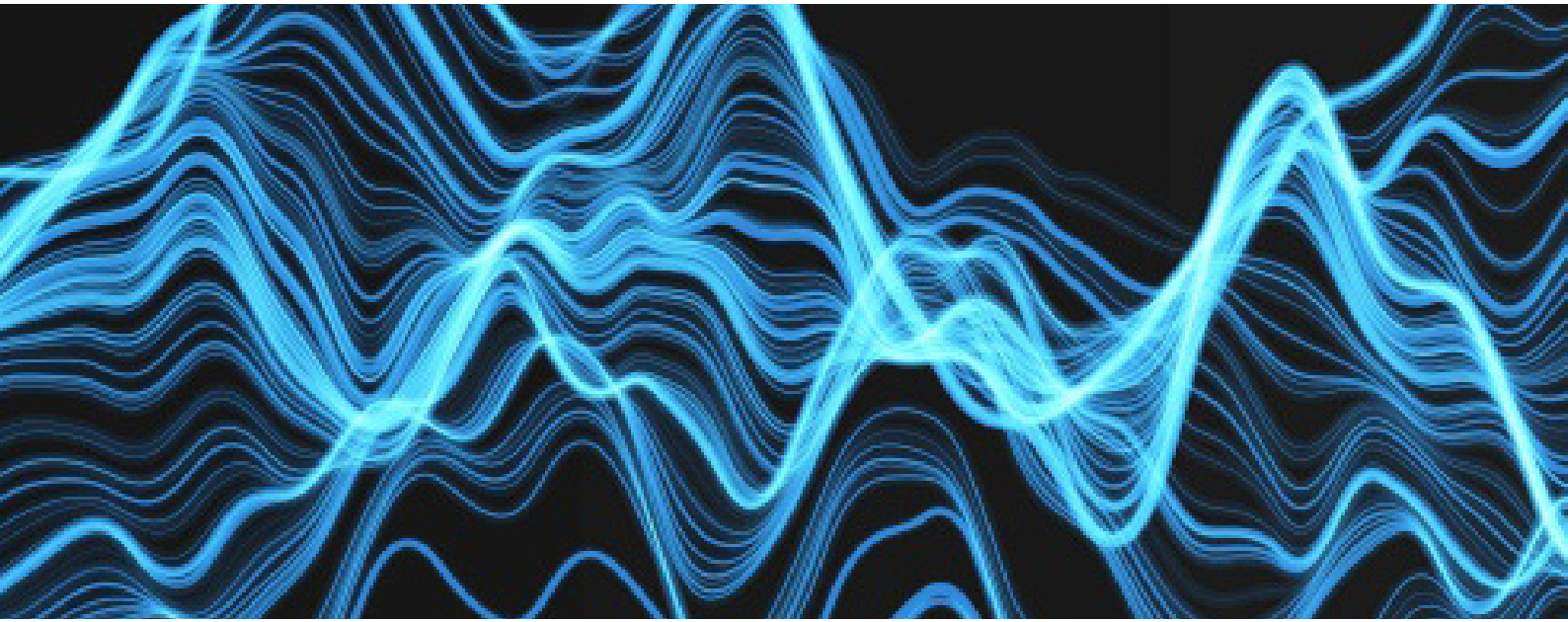
AHD / TVI Solution



○ AHD/TVI Camera

- Transmit video with Analog format
- Monitoring and recording with Full-HD high definition as well as Analog (SD)
- Transmit up to 500 meters, camera menu control (OSD) through UTC





○ Analog All in One DVR

- Support various video format such as CVBS, AHD, TVI and IP
- Transmit control signal from DVR to camera via coaxial cable (UTC)
- Reduce construction cost and time by using existing coaxial cable at sites



KT5000 Series

5M



5M



5M



5M



Product	KT5000BL-IR48-AF	KT5000D-SIR18-AF	KT5000VD-SIR18-AF	KT5000B
Img Sensor	1/2.8" 5M CMOS	1/2.8" 5M CMOS	1/2.8" 5M CMOS	1/2.8" 5M CMOS
Lens Type	Motorized Varifocal 2.7~12mm	Motorized Varifocal 2.7~12mm	Motorized Varifocal 2.7~12mm	Option C/CS Mount
Min. illumination	Color: 0.02Lux@F1.3 B/W: 0Lux (IR LED On)	Color: 0.02Lux@F1.3 B/W: 0Lux (IR LED On)	Color: 0.02Lux@F1.3 B/W: 0Lux (IR LED On)	Color: 0.02Lux@F1.3 B/W: 0.0005Lux@F1.3
IR Distance	60m	40m	45m	No IR

KT1080 Series

2M



2M



2M



2M



Product	KT1080BL-IR48	KT1080BL-IR36-F3.6	KT1080D-SIR18	KT1080D-IR24-F3.6
Img Sensor	1/2.8" 2M CMOS	1/2.8" 2M CMOS	1/2.8" 2M CMOS	1/2.8" 2M CMOS
Lens Type	Varifocal 2.7~12mm	Fixed 3.6mm	Varifocal 2.8~12mm	Fixed 3.6mm
Min. illumination	Color: 0.02Lux@F1.3 B/W: 0Lux (IR LED On)	Color: 0.02Lux@F1.3 B/W: 0Lux (IR LED On)	Color: 0.02Lux@F1.3 B/W: 0.0005Lux@F1.3	Color: 0.02Lux@F1.3 B/W: 0Lux (IR LED On)
IR Distance	60m	45m	40m	30m

2M



2M



2M



Product	KT1080VD-SIR18	KT1080B	KA1080B
Img Sensor	1/2.8" 2M CMOS	1/2.8" 2M CMOS	1/2.8" 2M CMOS
Lens Type	Varifocal 2.8~12mm	Option C/CS Mount	Option C/CS Mount
Min. illumination	Color: 0.02Lux@F1.3 B/W: 0Lux (IR LED On)	Color: 0.02Lux@F1.3 B/W: 0.0005Lux@F1.3	Color: 0.02Lux@F1.3 B/W: 0.0005Lux@F1.3
IR Distance	45m	No IR	No IR

HAC Series

16ch

8ch


4ch


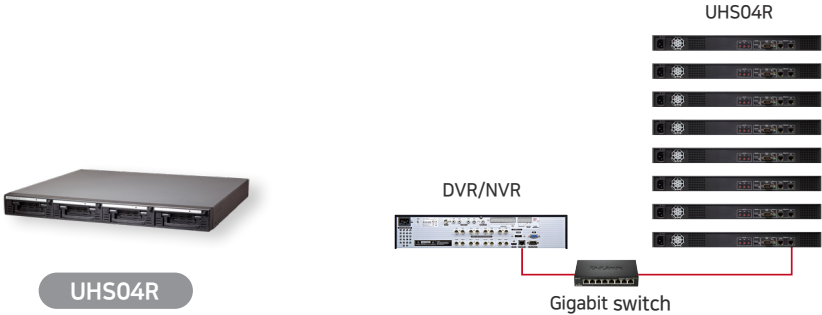


Product	HAC1650F-V3	HAC850F-V3	HAC450F-V3
Video	Input: 16CH Output: 1 HDMI, 1 VGA, 1 CVBS	Input: 8CH Output: 1 HDMI, 1 VGA, 1 CVBS	Input: 4CH Output: 1 HDMI, 1 VGA, 1 CVBS
Max. Resolution	AHD(5MP), TVI(5MP), CVBS(960H), Network Camera(4K)	AHD(5MP), TVI(5MP), CVBS(960H), Network Camera(4K)	AHD(5MP), TVI(5MP), CVBS(960H), Network Camera(4K)
Frame Rate	Max. 480fps@2MP, 240fps@4MP, 160fps@5MP	Max. 240fps@2MP, 120fps@4MP, 80fps@5MP	Max. 120fps@2MP, 60fps@4MP, 40fps@5MP
Protocol	AHD, TVI, CVBS, Network Camera(WESP, ONVIF)	AHD, TVI, CVBS, Network Camera(WESP, ONVIF)	AHD, TVI, CVBS, Network Camera(WESP, ONVIF)
Compression	H.265, H.264, MJPEG	H.265, H.264, JPEG	H.265, H.264, JPEG
Network port	1 Gigabit Ethernet(LAN/WAN)	1 Fast Ethernet(LAN/WAN)	1 Fast Ethernet(LAN/WAN)
Audio	Input: 8 RCA Output: 1 HDMI, 1 RCA	Input: 8 RCA Output: 1 HDMI, 1 RCA	Input: 4 RCA Output: 1 HDMI, 1 RCA
HDD	2 SATA, 1 eSATA	1 SATA	1 SATA
Dimension	380×268×45mm, 1.8kg	300×249×45mm, 1.2kg	300×249×45mm, 1.16kg

- 1
- 2
- 3
- 4
- 5
- 6
- 7
- 8
- 09
- AHD / TVI
- 10
- 11

Other Product

Model	Photo	Type	Channel	Transmission	TX/RX	Voltage
OPT-TX1-RS485P(-48V)		Optical Converter	1CH	Fiber-optic	Transmitter	DC 24V
			1CH		Transmitter	DC 48V
OPT-RX1-RS485P	1CH		Receiver		DC 24V	
OPT-TX4-RS485P	4CH		Transmitter		DC 24V	
OPT-RX16-RS485C	16CH		Receiver		DC 12V	

Joystick Keyboard	External Storage
 <p>WKC-200</p> <ul style="list-style-type: none"> · Touch Pad Mouse · Built-in 2-line character LCD · Built-in 3-Axis proportional joystick · Controls up to 255 cameras · Easy to be integrated with DVR 	 <p>UHS04R</p> <ul style="list-style-type: none"> · WEBGATE' DVR/NVR Dedicated Network storage device · Max. 256TB data capacity through 8 x UHS04R connection · Built-in RAID 1/5/10 · IPFR (Intelligent Power Failure Recovery) file system · Hot-swap, SATA type HDD bay (4ea)

WEBGATE

1

2

3

4

5

6

7

8

9

10

Other Product

11

Software



○ VMS _Control Center

- Central monitoring software supporting max. 1,024 units
- Support various useful features such as Viewset and eMAP(GIS map) grouping, hardware decoding and etc.
- Support AI camera event display



○ Mobile Viewer _WebEye

- Mobile App for remote monitoring anytime, anywhere
- Support live monitoring, PTZ control, event push alarm and etc
- Hardware decoding, 16 channel full frame decoding



○ HTML5 Web Viewer

- Monitoring and controlling through web browser without installing a separate plug-in (Active X)
- Full-frame monitoring, backup, playback, PTZ operation and other DVR control functions
- Support various web browsers such as Chrome, Edge, Safari and Mobile (iOS, Android)

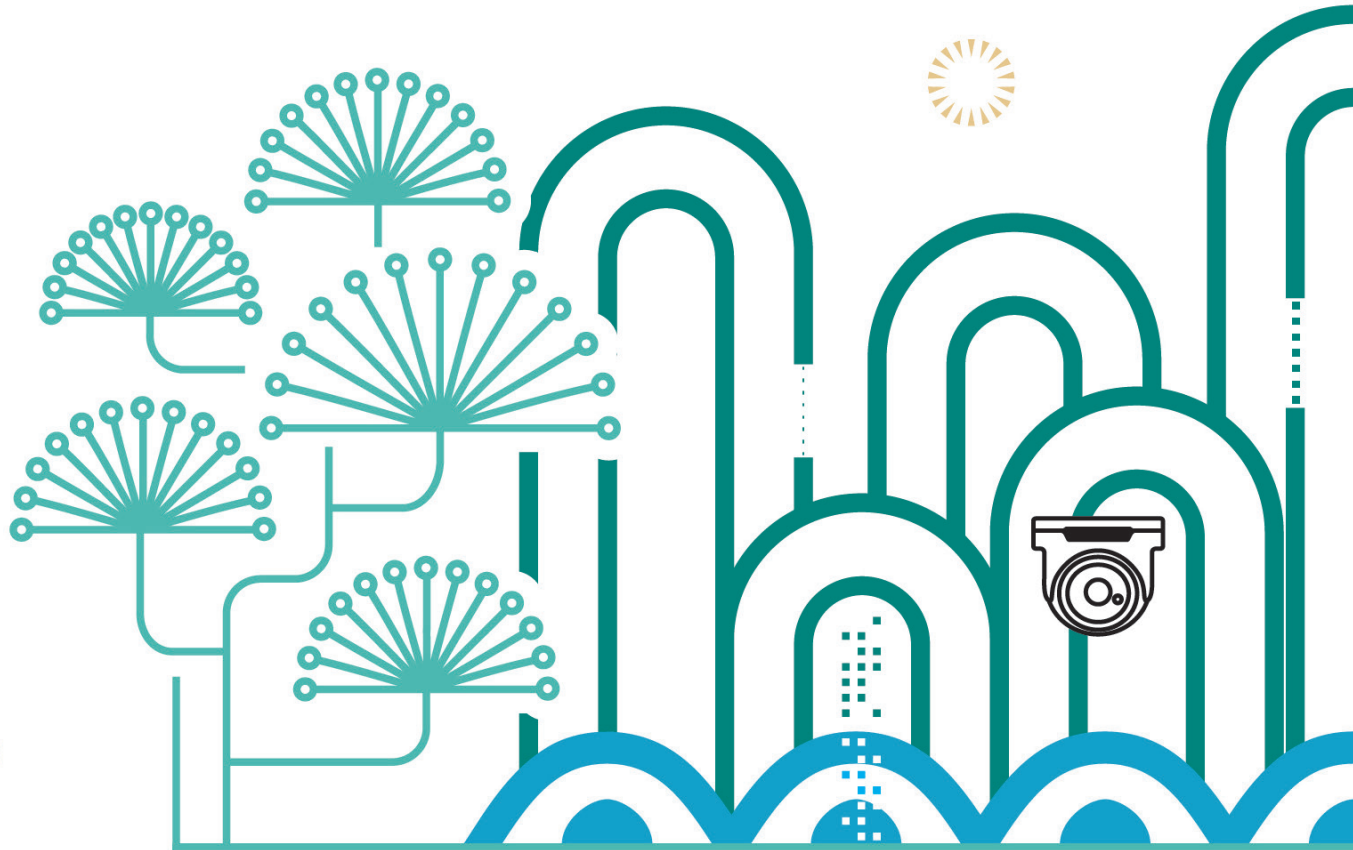
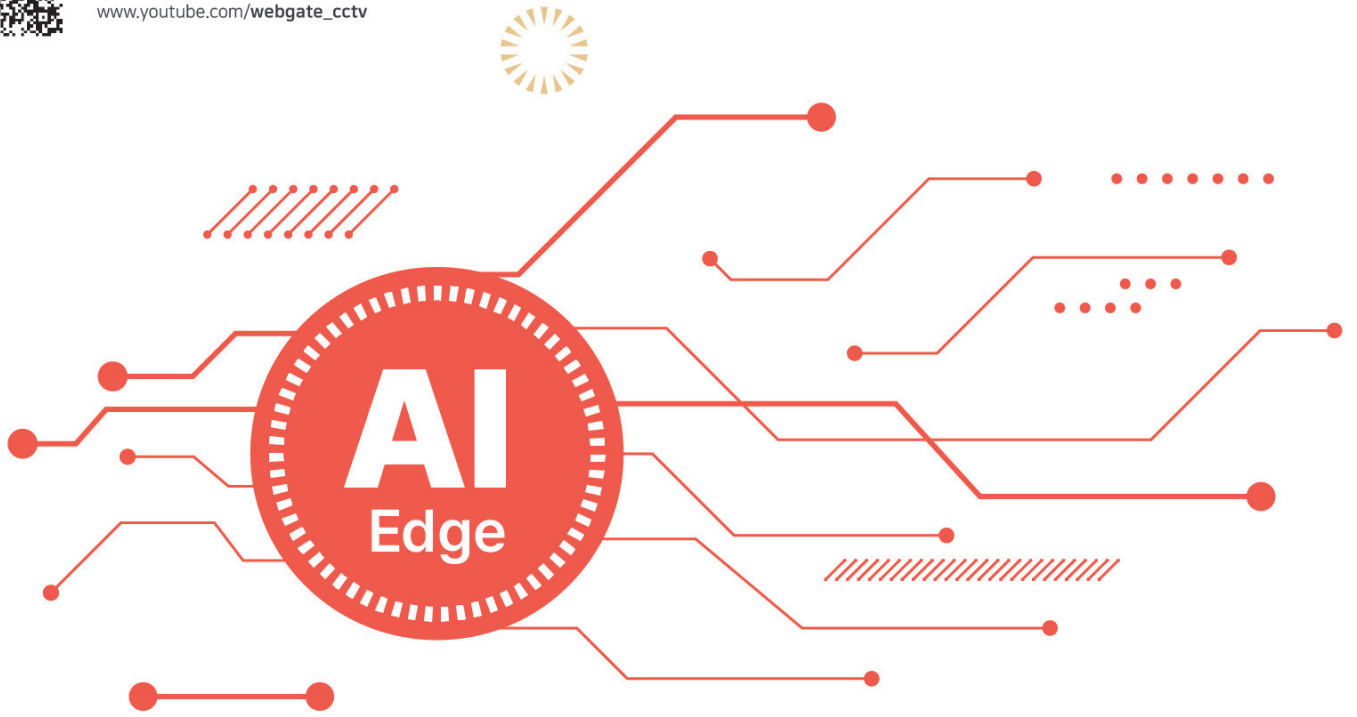


○ Streaming Solution _WinRDS

- Streaming server to redistribute recorder's image to multiple users
- Max. 512 video stream input, max. 512 video stream distribution and simultaneous access

○ SDK _WESP

- WESP SDK with excellent flexibility and interoperability
- Support HTML5 SDK



www.webgateinc.com

6F Hanlim Venture Town B/D, 284 Gongdanro Gunpo, Gyeonggi-do, 15809

Tel. +82-31-428-9334(9383) / E-mail. sales@webgateinc.com (Mon~Fri 09:00~18:00)

