

# IP Speed Dome Camera

## WebEye SPD350M

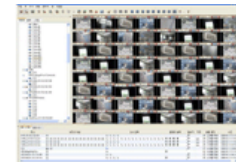


### Key Features

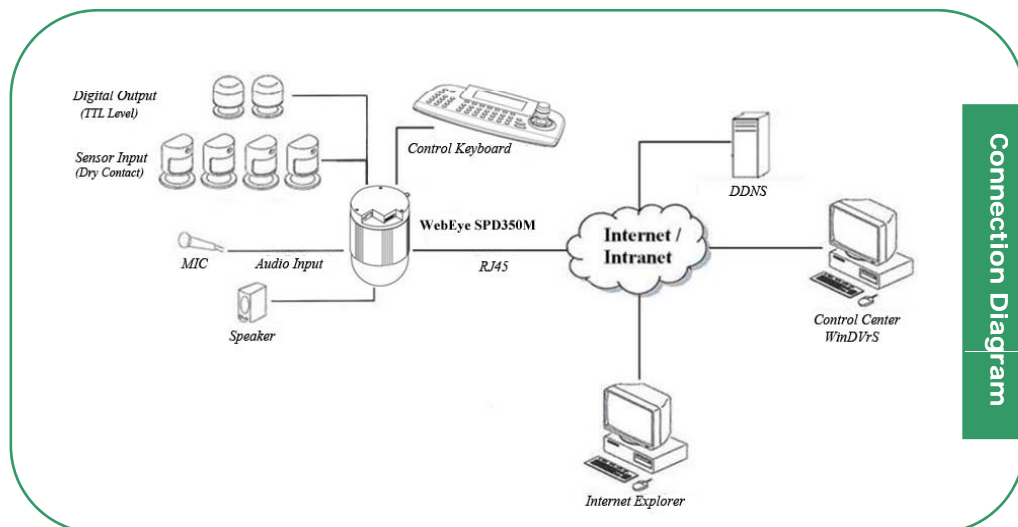
- 1ch network speed dome camera with MPEG-4
- Multi streams up to D1 60fps (Max. 8 streams) simultaneously
- Support dual-codec (MPEG-4 & JPEG) simultaneously
- Support various resolution, D1(4CIF), HALF D1(2CIF), CIF ,QCIF for both MPEG-4 & JPEG
- Progressive Scan for clearer, better quality video
- Auto ICR (IR cut-filter removal) for real night vision mode
- Electronic Image stabilizer
- Smart area zoom function
- x35 optical zoom (x12 digital zoom)
- On-screen PTZ control
- 64 steps preset position function
- Keyboard controller via RS485 (WKC-100)
- Support bi-directional audio (1ch input & output with RCA type)
- 4 sensor inputs (Dry contact) and 2 digital outputs (TTL level)
- 1 RS232 and 1 RS485 for PTZ control
- Support static or dynamic IP for xDSL and cable-modem user
- Provide remote monitoring software (Control Center software)
- IE browser viewing and setting
- Support WESP (WebGate embedded standard protocol) SDK for SI and project manager
- FCC, CE, MIC, RoHS approved



IE Browser View



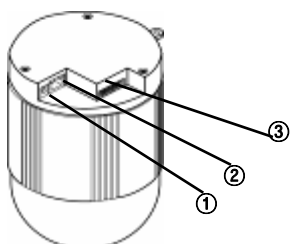
Control Center S/W



Connection Diagram

## Specification (SPD350M)

<b>Lens</b>	Lens Ex-changeable	Fixed
	Lens Optical	3.4 ~ 119 mm(F1.4 to F4.2) Optical zoom 35x , Digital zoom 12x
<b>CCD Camera</b>	CCD Format	Image Size 4.5mm Dia.(1/4 inch), Progressive Scan
	Video Type	NTSC/PAL
	Max. Resolution	720x486(NTSC), 752x582 (PAL)
	Image Transfer Rate	MAX. 30fps(NTSC) , MAX. 25fps (PAL)
	Minimum illumination	IR-cut ON(1/60s)(NTSC)/(1/50s)(PAL) – 0.5 Lux/1 Lux(Progressive) IR-cut ON(1/4s)(NTSC)/(1/3s)(PAL) – 0.05 Lux/0.1 Lux(Progressive) IR-cut ON(1/2s)(NTSC)/(1/1.5s)(PAL) – 0.025 Lux/0.05 Lux(Progressive) IR-cut OFF(1/4s)(NTSC)/(1/1/3s)(APL) – Approx. 0.01Lux(B/W)(Progressive)
	AGC	Yes
	Auto white balance	Yes
	Back-light compensation	Yes
<b>Image Compression</b>	MPEG-4	Resolution Up to 720x480 @ 30 frames per second Support D1(4CIF)/HALF(2CIF)/CIF/QCIF
	JPEG	Resolution Support D1(4CIF)/HALF(2CIF)/CIF/QCIF
	Performance	Up to 8 streams simultaneously Up to MPEG-4 D1(4CIF) 60fps performance
<b>Network</b>	Program	Control Center, Web Browser
	Protocol	TCP/IP, HTTP, ARP, ICMP, UDP, FTP, SMTP, DNS, DHCP, PPPoE, SNTp
	Connection	10/100Mbps Ethernet (RJ-45)
	F/W Upgrade	Firmware upgrade via Network
	Number of clients	10 users
	Security	Encrypted password, IP filtering
<b>Input / Output</b>	Video Output	VBS, 1Vp-p / 75Ω, Composite signal
	Audio	1 input : Line-in, 1Vpp 1 output : Line-out, 1Vpp
	Sensor Input	Software-controlled 4 sensor inputs (Dry contact)
	Digital Output Schedule	Daily : Day / Night / Four-segment time frame Weekly : Weekdays / Weekends Conditions : MD, Sensor
	Digital Output	Software-controlled 2 digital outputs (TTL level)
<b>PTZ Control</b>	Serial Port	RS232, RS485(Keyboard)
	Control Method (Remote)	On-the-screen PTZ control on PC
	Preset Mode	64 points preset per channel
<b>Additional Function</b>	Password Protection	Yes
	Video Motion Detection	Yes
	FTP/E-mail Sending	Yes
<b>Operation System</b>		Embedded Linux
<b>Environments</b>	Operation Temperature	5℃~45℃
	Storage Temperature	-10℃~55℃
	Operation Humidity	30%~80%, free of condensation
	Storage Humidity	93% below, free of condensation
<b>Electricity</b>	DC Adaptor (optional)	Input : AC 110~220V Output : DC 12V 5A
	Power Consumption	Max. 12W (DC12V)
<b>Mechanical</b>	Dimension	126.0(Φ) x 191.0(mm)
	Weight	1.2kg



- (1) Power Connector (DC 12V 5A)
- (2) Ethernet Connector
- (3) I/O Connector

Rear Panel