

# IP Speed Dome Camera

## WebEye SPD260M

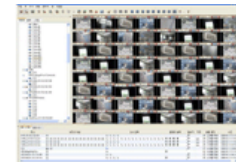


### Key Features

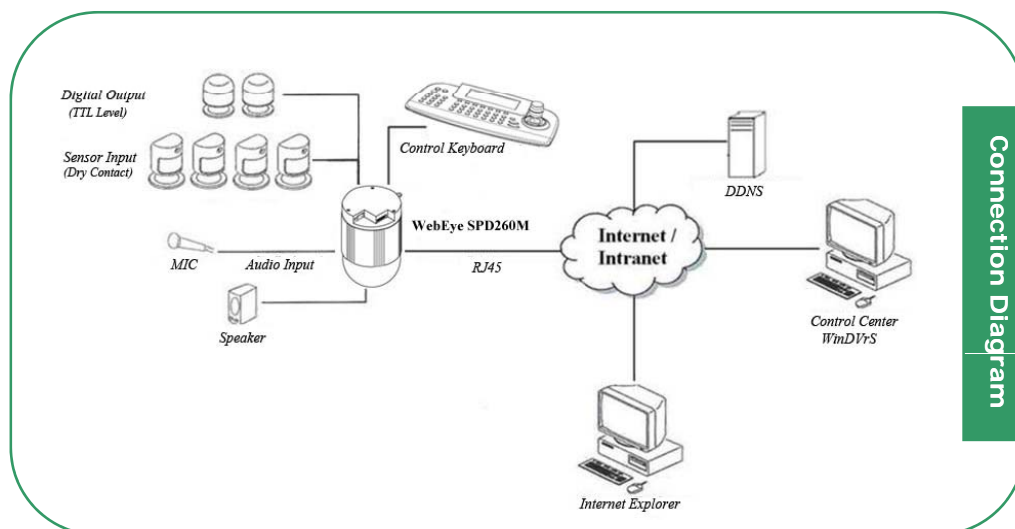
- 1ch network speed dome camera with MPEG-4
- Multi streams up to D1 60fps (Max. 8 streams) simultaneously
- Support dual-codec (MPEG-4 & JPEG) simultaneously
- Support various resolution, D1(4CIF), HALF D1(2CIF), CIF ,QCIF for both MPEG-4 & JPEG
- Auto ICR (IR cut-filter removal) for real night vision mode
- Image stabilizer
- Electronic-flip (E-flip) function
- Smart area zoom function
- x26 optical zoom (x12 digital zoom)
- On-screen PTZ control
- 64 steps preset position function
- 360°/s high-speed scan mode
- Keyboard controller via RS485 (WKC-100)
- Support bi-directional audio (1ch input & output with RCA type)
- 4 sensor inputs (Dry contact) and 2 digital outputs (TTL level)
- 1 RS232 and 1 RS485 for PTZ control
- Support static or dynamic IP for xDSL and cable-modem user
- Provide remote monitoring software (Control Center software)
- IE browser viewing and setting
- Support WESP (WebGate embedded standard protocol) SDK for SI and project manager
- FCC, CE, MIC, RoHS approved



IE Browser View

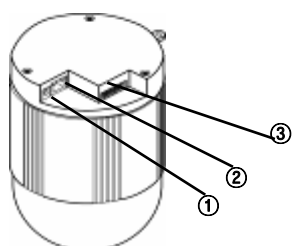


Control Center S/W



## Specification (SPD260M)

<b>Lens</b>	Lens Ex-changeable		Fixed
	Lens Optical		3.5 ~ 91.0 mm(F1.6 to F3.8) Optical zoom 26x , Digital zoom 12x
<b>CCD Camera</b>	CCD Format		1/4" ex-view HAD color CCD (Sony)
	Video Type		NTSC/PAL
	Max. Resolution		720x486(NTSC), 752x582 (PAL)
	Image Transfer Rate		MAX. 30fps(NTSC) , MAX. 25fps (PAL)
	Minimum illumination		2.0 lux (typical) (F1.6, 50 IRE)
	AGC		Yes (18dB)
	Auto white balance		Yes
	Back-light compensation		Yes
<b>Image Compression</b>	MPEG-4	Resolution	Up to 720x480 @ 30 frames per second Support D1(4CIF)/HALF(2CIF)/CIF/QCIF
	JPEG	Resolution	Support D1(4CIF)/HALF(2CIF)/CIF/QCIF
	Performance		Up to 8 streams simultaneously Up to MPEG-4 D1(4CIF) 60fps performance
<b>Network</b>	Program		Control Center, Web Browser
	Protocol		TCP/IP, HTTP, ARP, ICMP, UDP, FTP, SMTP, DNS, DHCP, PPPoE, SNTP
	Connection		10/100Mbps Ethernet (RJ-45)
	F/W Upgrade		Firmware upgrade via Network
	Number of clients		10 users
	Security		Encrypted password, IP filtering
<b>Input / Output</b>	Video Output		VBS, 1Vp-p / 75Ω, Composite signal
	Audio		1 input : Line-in, 1Vpp 1 output : Line-out, 1Vpp
	Sensor Input		Software-controlled 4 sensor inputs (Dry contact)
	Digital Output Schedule		Daily : Day / Night / Four-segment time frame
			Weekly : Weekdays / Weekends
	Digital Output		Conditions : MD, Sensor Software-controlled 2 digital outputs (TTL level)
<b>PTZ Control</b>	Serial Port		RS232, RS485(Keyboard)
	Control Method (Remote)		On-the-screen PTZ control on PC
	Preset Mode		64 points preset per channel
<b>Additional Function</b>	Password Protection		Yes
	Video Motion Detection		Yes
	FTP/E-mail Sending		Yes
<b>Operation System</b>			Embedded Linux
<b>Environments</b>	Operation Temperature		5℃~45℃
	Storage Temperature		-10℃~55℃
	Operation Humidity		30%~80%, free of condensation
	Storage Humidity		93% below, free of condensation
<b>Electricity</b>	DC Adaptor (optional)		Input : AC 110~220V Output : DC 12V 5A
	Power Consumption		Max. 12W (DC12V)
<b>Mechanical</b>	Dimension		126.0(Φ) x 191.0(mm)
	Weight		1.2kg



- (1) Power Connector (DC 12V 5A)
- (2) Ethernet Connector
- (3) I/O Connector

Rear Panel