

# IP Camera

## WebEye HDC730

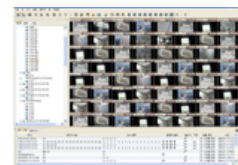


### Key Features

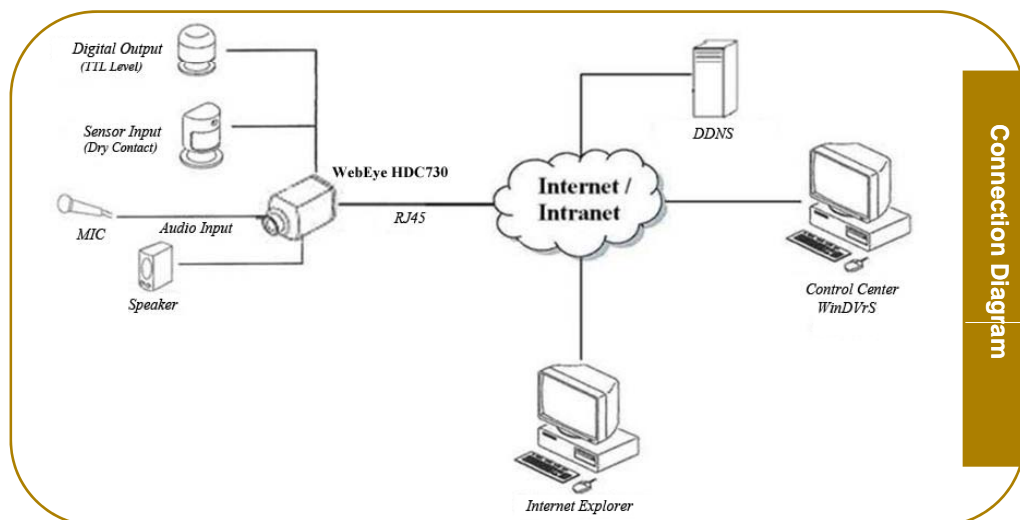
- 1ch high definition network camera with MPEG-4
- Support up to 30fps@720p
- Support resolution, 1280 x 720(720p)
- Progressive scan diagonal 6.0mm(Type 1/3)
- 1.25M effective pixel color Exview HAD CCD
- PoE (Power over Ethernet) optional
- Support bi-directional audio (1ch input & output)
- 2 sensor inputs (Dry contact) and 2 digital outputs (TTL level)
- 1 RS232 and 1 RS422/485 for PTZ control
- Support static or dynamic IP for xDSL and cable-modem user
- Provide remote monitoring software (Control center software)
- IE browser viewing and setting
- Support WESP (WebGate embedded standard protocol) SDK for SI and project manager
- FCC, CE, MIC, RoHS approved



IE Browser View



Control Center S/W



## Specification (HDC730)

<b>Lens</b>	Lens Mount		CS, C type with adaptor ring
	Lens Type		Fixed, DC iris, Video Iris
<b>CCD Camera</b>	CCD Format		Progressive Scan Diagonal 6.0mm(Type 1/3), Color Exview HAD CCD
	Resolution		1280 x 720(720p)
	Effective Pixels		1.25M-Effective Pixel
	Min. Lux Level		Color :0.3Lux (F1.2), B/W : 0.002Lux(Sense-up)
	Sensitivity(F5.6)		3200K, 706 cd/m2, Y signal, 1/30 s accumulation
	White balance		ATW/AWC/PUSH
	AGC		Yes
	Back-light compensation		Yes
<b>Image Compression</b>	MPEG-4	Resolution	Up to 1280x720 @ 30 frames per second Support 720p/D1(4CIF)/HALF(2CIF)/CIF/QCIF
	JPEG	Resolution	Support 720p/D1(4CIF)/HALF(2CIF)/CIF/QCIF
	Performance		Up to 2 streams simultaneously Up to MPEG-4 720p 30fps performance
<b>Network</b>	Program		Control Center, Web Browser
	Protocol		TCP/IP, HTTP, ARP, ICMP, UDP, FTP, SMTP, DNS, DHCP, PPPoE, SNMP
	Connection		10/100Mbps Ethernet (RJ-45)
	F/W Upgrade		Firmware upgrade via Network
	Number of clients		5 users
	Security		Encrypted password, IP filtering
<b>Input / Output</b>	Video		1 ch output
	Audio		1 input : Line-in, 1Vpp 1 output : Line-out, 1Vpp
	Sensor Input		Software-controlled 2 sensor input (Dry contact)
	Digital Output Schedule		Daily : Day / Night / Four-segment time frame Weekly : Weekdays / Weekends Conditions : MD, Sensor
	Digital Output		Software-controlled 2 digital outputs (TTL level)
<b>PTZ Control</b>	Serial Port		RS232, RS422/485
	Control Method (Remote)		On-the-screen PTZ control on PC
	Preset Mode		64 points preset per channel
<b>Additional Function</b>	Password Protection		Yes
	Video Motion Detection		Yes
	FTP/E-mail Sending		Yes
<b>Operation System</b>			Embedded Linux
<b>Environments</b>	Operation Temperature		5℃~40℃
	Storage Temperature		-10℃~55℃
	Operation Humidity		30%~80%, free of condensation
	Storage Humidity		93% below, free of condensation
<b>Electricity</b>	DC Adaptor (optional)		Input : AC 110~220V Output : DC 12V 5A
	Power Consumption		Max. 7W (DC12V), 8W(PoE)
<b>Mechanical</b>	Dimension (mm)		63(W) x 145(D) x 68(H)
	Weight		0.46kg