

# IP Camera

## WebEye E30M

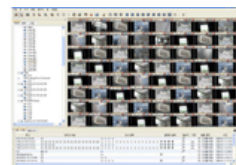


### Key Features

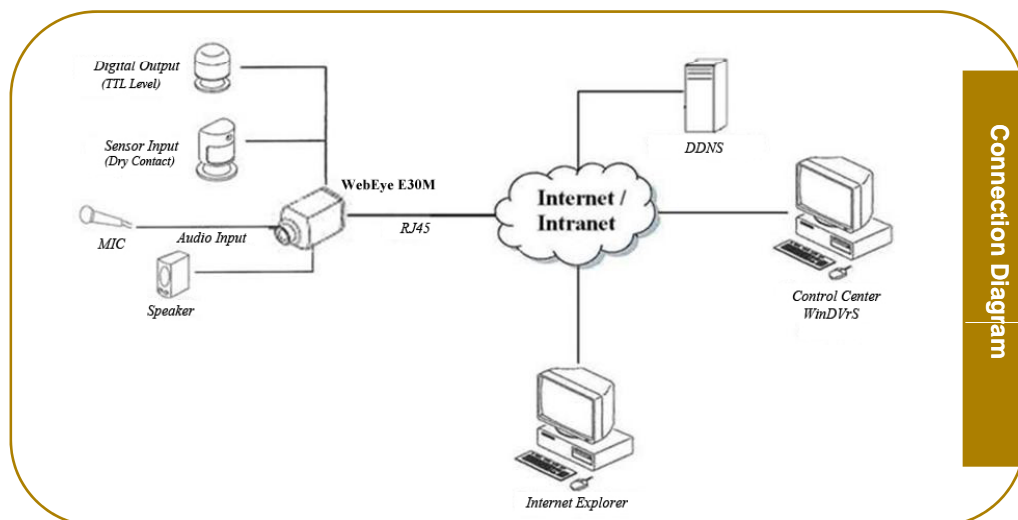
- 1ch network camera with MPEG-4
- Multi streams up to D1 60fps (Max. 8 streams) simultaneously
- Support dual-codec (MPEG-4 & JPEG) simultaneously
- Support various resolution, D1(4CIF), HALF D1(2CIF), CIF, QCIF for both MPEG-4 & JPEG
- Built-in 1/3" Sony CCD, 410k pixel
- 520TV lines resolution
- Day & night camera
- SNR (Super noise reduction) technology
- PoE (Power over Ethernet) optional
- Support bi-directional audio (1ch input & output with RCA type)
- 1 sensor inputs (Dry contact) and 1 digital outputs (TTL level)
- 1 RS232 and 1 RS485 for PTZ control
- Support static or dynamic IP for xDSL and cable-modem user
- Provide remote monitoring software (Control center software)
- IE browser viewing and setting
- Support WESP (WebGate embedded standard protocol) SDK for SI and project manager
- FCC, CE, MIC, RoHS approved



IE Browser View

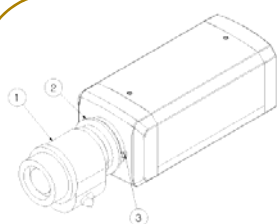


Control Center S/W

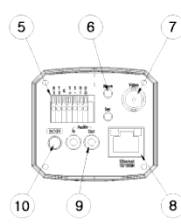
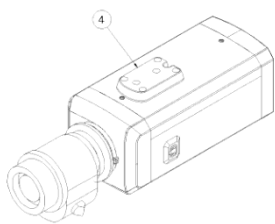


## Specification (E30M)

<b>Lens</b>	Lens Mount		CS, C type with adaptor ring
	Lens Type		Fixed, DC iris
<b>CCD Camera</b>	CCD Format		1/3" Sony HAD high-resolution color CCD, 410k
	Video Type		NTSC / PAL
	Resolution		520 TV lines (Min.)
	Effective Pixels		768x494 (NTSC) / 752x582 (PAL)
	Min. Lux Level		Color :0.3Lux (F1.2), B/W : 0.002Lux(Sense-up)
	AGC		Yes
	S/N Ratio		More than 50dB
Day & Night		Automatically switch to monochrome mode	
<b>Image Compression</b>	MPEG-4	Resolution	Up to 720x480 @ 30 frames per second Support D1(4CIF)/HALF(2CIF)/CIF/QCIF
	JPEG	Resolution	Support D1(4CIF)/HALF(2CIF)/CIF/QCIF
	Performance		Up to 8 streams simultaneously Up to MPEG-4 D1(4CIF) 60fps performance
<b>Network</b>	Program		Control Center, Web Browser
	Protocol		TCP/IP, HTTP, ARP, ICMP, UDP, FTP, SMTP, DNS, DHCP, PPPoE, SNTP
	Connection		10/100Mbps Ethernet (RJ-45)
	F/W Upgrade		Firmware upgrade via Network
	Number of clients		5 users
	Security		Encrypted password, IP filtering
<b>Input / Output</b>	Video		1 ch output
	Audio		1 input : Line-in, 1Vpp 1 output : Line-out, 1Vpp
	Sensor Input		Software-controlled 1 sensor input (Dry contact)
	Digital Output Schedule		Daily : Day / Night / Four-segment time frame Weekly : Weekdays / Weekends Conditions : MD, Sensor
	Digital Output		Software-controlled 1 digital outputs (TTL level)
<b>PTZ Control</b>	Serial Port		RS232, RS485
	Control Method (Remote)		On-the-screen PTZ control on PC
	Preset Mode		64 points preset per channel
<b>Additional Function</b>	Password Protection		Yes
	Video Motion Detection		Yes
	FTP/E-mail Sending		Yes
<b>Operation System</b>			Embedded Linux
<b>Environments</b>	Operation Temperature		5℃~40℃
	Storage Temperature		-10℃~55℃
	Operation Humidity		30%~80%, free of condensation
	Storage Humidity		93% below, free of condensation
<b>Electricity</b>	DC Adaptor (optional)		Input : AC 110~220V Output : DC 12V 5A
	Power Consumption		Max. 6W (DC12V), 7W(PoE)
<b>Mechanical</b>	Dimension (mm)		60(W) x 130(D) x 60(H)
	Weight		0.3kg



- (1) Lens
- (2) "+" shaped screw for fixing adjustment ring
- (3) Flange back adjustment ring
- (4) Bracket for fixing camera



- (5) Input/Output Connector
- (6) OSD button
- (7) Video Output
- (8) Ethernet
- (9) Audio Input/Output
- (10) DC Power Input

Front & Rear Panel