

IP Video Server

WebEye B101M

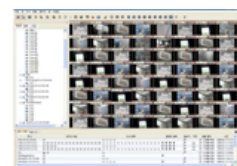


Key Features

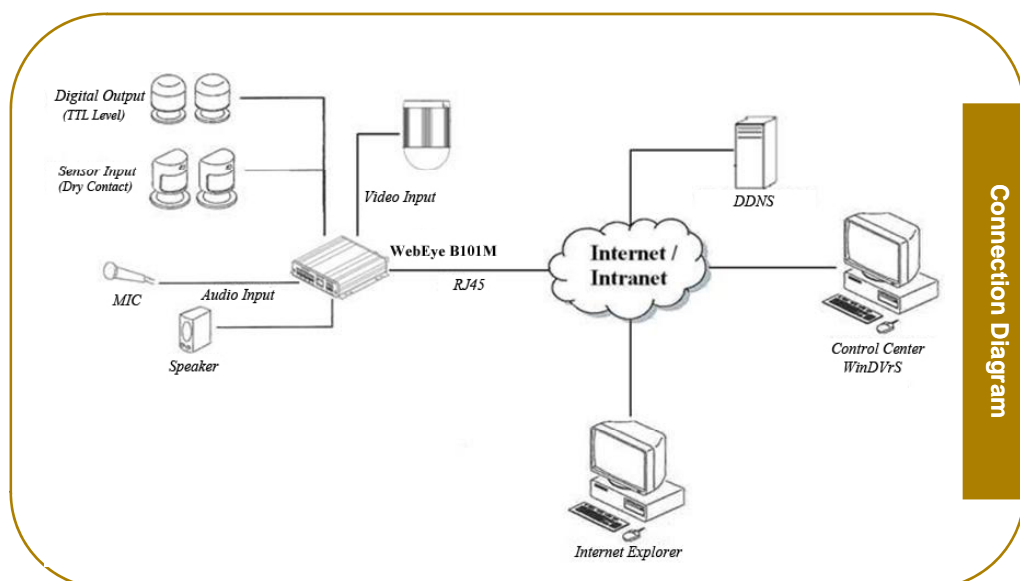
- 1ch video server with MPEG-4
- Multi streams up to D1 60fps (Max. 8 Streams) simultaneously
- Support dual-codec (MPEG-4 & JPEG) simultaneously
- Support various resolution, D1(4CIF), HALF D1(2CIF), CIF ,QCIF for both MPEG-4 & JPEG
- Support bi-directional audio (1ch input with RCA type)
- 2 sensor inputs (Dry contact) and 2 digital outputs (TTL level)
- 1 RS232 and 1 RS422/485 for PTZ control
- Support static or dynamic IP for xDSL & Cable-Modem user
- Provide remote monitoring software (Control Center software)
- IE browser viewing and setting
- Support WESP (WebGate embedded standard protocol) SDK for SI and project manager
- FCC, CE, MIC, RoHS approved



IE Browser View

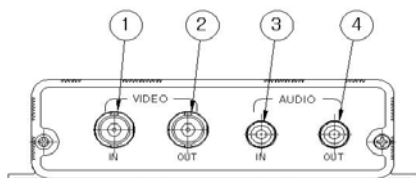


Control Center S/W

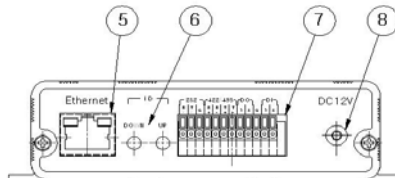


Specification (B101M)

| | | | |
|----------------------------|-------------------------|------------|--|
| Image Compression | MPEG-4 | Resolution | Up to 720x480 @ 30 frames per second Support D1(4CIF)/HALF(2CIF)/CIF/QCIF |
| | JPEG | Resolution | Support D1(4CIF)/HALF(2CIF)/CIF/QCIF |
| | Performance | | Up to 8 streams simultaneously Up to MPEG-4 D1(4CIF) 60fps performance |
| Network | Program | | Control Center, Web browser |
| | Protocol | | TCP/IP, HTTP, ARP, ICMP, UDP, FTP, SMTP, DNS, DHCP, PPPoE, SNTP |
| | Connection | | 10/100Mbps Ethernet (RJ-45) |
| | F/W Upgrade | | Firmware upgrade via network |
| | Number of clients | | 10 users |
| | Security | | Encrypted password, IP filtering |
| Input / Output | Video | | 1 Input : CVBS(BNC) 1 Output : CVBS(BNC) |
| | Audio | | 1 Input : Line-in, 1Vpp 1 Output : Line-out, 1Vpp |
| | Sensor Input | | Software-controlled 2 sensor inputs (Dry contact) |
| | Digital Output Schedule | | Daily : Day / Night / Four-segment time frame Weekly : Weekdays / Weekends Conditions : MD, Sensor |
| | Digital Output | | Software-controlled 2 digital outputs (TTL level) |
| | Serial Port | | RS232, RS422/485 |
| PTZ Control | Control Method (Remote) | | On-the-screen PTZ control on PC |
| | Preset Mode | | 64 points preset per channel |
| | Password Protection | | Yes |
| Additional Function | Video Motion Detection | | Yes |
| | FTP/E-mail Sending | | Yes |
| | Operation System | | Embedded Linux |
| Environments | Operation Temperature | | 5℃~45℃ |
| | Storage Temperature | | -10℃~55℃ |
| | Operation Humidity | | 30%~80%, free of condensation |
| | Storage Humidity | | 93% below, free of condensation |
| Electricity | DC Adaptor (optional) | | Input : AC 110~220V Output : DC 12V 5A |
| | Power Consumption | | Max. 5W (DC12V) |
| Mechanical | Dimension (mm) | | 121.0(W) x 124.0(D) x 33.0(H) |
| | Weight | | 0.3Kg |



- (1) BNC Connector for Video Input
- (2) BNC Connector for Video Output
- (3) RCA Connector for Audio Input
- (4) RCA Connector for Audio Output



- (5) Ethernet Connector
- (6) Tact Switch for OSD
- (7) Terminal Block for RS-232, RS422/485
- (8) Power Connector (DC12V)

Front & Rear Panel

Video Server / WebEye B101M