

HD-CCTV Products & Solutions

Premium to your HD-CCTV



WEBGATE



CORPORATION

EX-SDI & AHD Hybrid DVR Series

Premium Quality Real-time Hybrid HD DVR

- / Auto detection of HD-SDI, EX-SDI, AHD, 960H, SD
- / Differentiated recording & playback performance
- / Max. 500m video transmission of HD video(EX-SDI)
- / Diverse video outputs via HDMI, VGA and BNC port
- / Step by step upgrade your legacy CCTV into HD-CCTV

HD-SDI EX-SDI AHD 960H SD



Multi Input DVR

- Supports HD-SDI, EX-SDI, AHD, 960H, SD
- Full-frame, Real-time recording & Playback
- Allows different video input formats per channel

Market proven product quality

- High image quality equivalent to full-HD broadcasting
- IPFR : Intelligent Power Failure Recovery
- At-the-PC Playback feature for damaged DVR

Easy to Use GUI

- User friendly menu & Setup wizard
- Digital zoom up to 10x in Live & Search mode
- Automatic HDD capacity calculation during recording setting
- Individual recording setup per channel
- Customized screen mode

Intelligent Search features

- Calendar, Smart, Thumbnail, Bookmark, Event, Text Search
- Frame-by-Frame forward and backward playback in search mode
- Playback with 1/2x, 1x, 2x, 4x, 8x, 16x, 32x, 64x speed

Powerful Networking

- 1,024 DVRs can be connected simultaneously to VMS
- Up to 128 channels can be displayed on one PC
- Redistribution streaming server supports multiple client connections
- Automatic schedule backup via network
- Triple streaming(Dual H.264 & MJPEG) support
- Automatic port-forwarding via UPnP (Universal Plug & Play)
- Supports RTSP(Real Time Streaming Protocol) Max. 180fps

Mobile Connection

- Live monitoring & playback for Android and iPhone
- Easy & Quick connection and registration
- Real-time push alarm to smart phone and mobile device

External Mass Storage Interface

- Max 128TB in Gigabit Ethernet connection with storage(NS04R)
- eSATA storage interface supporting up to 32TB

Long Distance video transmission over coax

- EX-SDI technology converts Full-HD video to the level indistinguishable from the original video, and transmits it digitally through coaxial cable up to 500m(1,500ft). DVR can receive this EX-SDI video without any additional equipment



HS1620F-D

- 16ch DVR supporting diverse video inputs
- Max. 5 internal hard disk drives
- 445(W) x 418(D) x 88(H) mm



HSC821F-D

- 8ch DVR supporting diverse video inputs
- Max. 2 internal hard disk drives
- 350(W) x 393(D) x 88(H) mm



HSC420F-D

- 4ch DVR supporting diverse video inputs
- 2 internal hard disk drives
- 290(W) x 232(D) x 65(H) mm

Key Features for all models

- **Standalone DVR supporting multi-video input**
- **Supports diverse video standards**
 - Digital HD : HD-SDI, EX-SDI / 1080p, 720p
 - Analog HD : AHD / 1080p, 720p
 - Analog SD : 960H, SD / 960H, 480i, 576i
- **Built-in EX-SDI receiver function for all channels** (Supports up to 500m HD video transmission without repeater)
- **Up to 30fps(25fps) recording and playback per channel**
- **Adjustable recording quality and framerate per channel**
- **High-resolutions over 1200TVL at Live/Playback for HD1080p and EX-SDI video input**
- **Supports Dual Codec(H.264,JPEG) & Multi Stream**
- **HDMI, VGA, BNC video output**
 - HDMI : 1920 x 1080 video output
 - VGA : 1920 x 1080, 1280 x 1024, 1024 x 768, 800 x 600 video output
 - BNC : CVBS. User-defined display & Alarm spot monitor support
- **Storage expansion up to 128TB with NS04R via Gigabit Ethernet, 32TB with eSATA**
- **Date/Time, Calendar/Time-line, Event, Thumbnail(Time Interval), Text Search available**
- **Provides bundle VMS program, managing Max. 1,024 DVRs in various ways such as GIS map(TBD), Viewset**
- **Java Viewer for Chrome, Firefox, Safari, Mac OS X**
- **Supports various mobile platform (iPhone/Android Viewer)**
- **Real-time push alarm to smart phone by mobile application**
- **Real-time fire alert to DVR, VMS and smart phone when using flame detection camera**

EX-SDI Hybrid DVR Series supporting PoC/CoC

Premium Quality One-Cable Solution / Real-time Hybrid HD DVR

- / Auto detection of diverse video formats
- / Full-frame, Real-time display & playback
- / PoC(Power over Coax) / CoC(Control over Coax)
- / Max. 400m video transmission of HD video(EX-SDI)
- / Diverse video outputs via HDMI, VGA and BNC port



One cable solution with PoC / CoC

Multi Input DVR

- Supports HD-SDI, EX-SDI, 960H, SD (HDC420F-PD only supports HD-SDI, EX-SDI)
- Full-frame, Real-time recording & playback
- Allows different video input formats per channel
- Supports max. 400m(1,200ft) HD-SDI transmission distance

Market proven product quality

- High image quality equivalent to full-HD broadcasting
- Strong lightning protection : 6KV lightning arresters
- IPFR : Intelligent Power Failure Recovery
- At-the-PC Playback feature for damaged DVR

Easy to Use GUI

- User friendly menu & Setup wizard
- Digital zoom up to 10x in Live & Search mode
- Automatic HDD capacity calculation during recording setting
- Individual recording setup per channel
- Customized screen mode

Intelligent Search features

- Calendar, Smart, Thumbnail, Bookmark, Event, Text Search
- Frame-by-Frame forward and backward playback in search mode
- Playback with 1/2x, 1x, 2x, 4x, 8x, 16x, 32x, 64x speed

Powerful Networking

- 1,024 DVRs can be connected simultaneously to VMS
- Up to 128 channels can be displayed on one PC
- Redistribution streaming server supports multiple client connections
- Automatic schedule backup via network
- Triple streaming(Dual H.264 & MJPEG) support
- Automatic port-forwarding via UPnP (Universal Plug & Play)
- Supports RTSP(Real Time Streaming Protocol) Max. 180fps

Mobile Connection

- Live monitoring & playback for Android and iPhone
- Easy & Quick connection and registration
- Real-time push alarm to smart phone and mobile device

External Mass Storage Interface

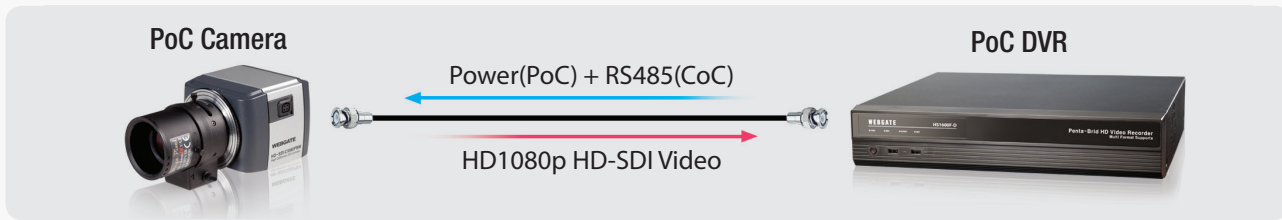
- Dedicated external storage via Gigabit Ethernet supporting up to 128TB
- eSATA storage interface supporting up to 32TB

PoC(Power over Coax)

- Cameras can be powered by PoC DVR through coaxial cable
- No need to install power for camera separately

CoC(Control over Coax)

- DVR can control camera through coaxial cable
- Supports OSD menu, Zoom/Focus control, F/W upgrade



HS1620F-PD

- 16ch DVR supporting diverse video inputs
- Max. 5 internal hard disk drives
- 445(W) x 418(D) x 88(H) mm



HSC821F-PD

- 8ch DVR supporting diverse video inputs
- Max. 2 internal hard disk drives
- 350(W) x 393(D) x 88(H) mm



HDC420F-PD

- 4ch DVR only supporting HD-SDI, EX-SDI
- 2 internal hard disk drives
- 290(W) x 232(D) x 65(H) mm

Key Features for all models

- **Standalone DVR supporting multi-video input**
- **Supports PoC(power over coax), CoC(control over coax)**
- **Supports diverse video standards**
 - Digital HD : HD-SDI, EX-SDI / 1080p, 720p
 - Analog SD : 960H, SD / 960H, 480i, 576i
- **Built-in EX-SDI receiver function for all channels** (Supports up to 400m HD video transmission without repeater)
- **Up to 30fps(25fps) recording and playback per channel**
- **Adjustable recording quality and framerate per channel**
- **High-resolutions over 1200TVL at Live/Playback for HD1080p and EX-SDI video input**
- **Supports Dual Codec(H.264,JPEG) & Multi Stream**
- **HDMI, VGA, BNC video output**
 - HDMI : 1920 x 1080 video output
 - VGA : 1920 x 1080, 1280 x 1024, 1024 x 768, 800 x 600 video output
 - BNC : CVBS. User-defined display & Alarm spot monitor support
- **Storage expansion up to 128TB with NS04R via Gigabit Ethernet, 32TB with eSATA**
- **Date/Time, Calendar/Time-line, Event, Thumbnail(Time Interval), Text Search available**
- **Provides bundle VMS program, managing Max. 1,024 DVRs in various ways such as GIS map(TBD), Viewset**
- **Java Viewer for Chrome, Firefox, Safari, Mac OS X**
- **Supports various mobile platform (iPhone/Android Viewer)**
- **Real-time push alarm to smart phone by mobile application**
- **Real-time fire alert to DVR, VMS and smart phone when using flame detection camera**

HD-TVI DVR Series - Analog HD DVR

Premium Quality Hybrid HD-TVI DVR

- / 4ch/ 8ch /16ch Standalone TVI DVR
- / Fully compatible with TVI 1080p & 720p video format
- / Auto detection of video format -TVI, Analog, 960H video
- / Diverse models from low-cost to high performance



Multi Input HD DVR

- 4ch, 8ch, 16ch Standalone TVI DVR models
- Supports TVI 1080p & 720p, Analog, 960H video input

The best way to upgrade existing analog CCTV system to HD system

- Most suitable for upgrading the old analog system to HD system
- Existing analog camera and equipment can be used
- Long-distance video transmission as that of analog

Easy to Use GUI

- Sophisticated and easy to use user interface
- Digital zoom up to 10x in Live & Search mode
- Automatic HDD capacity calculation during recording setting
- Individual recording setup per channel
- Customized screen mode

Intelligent Search features

- Calendar, Smart, Thumbnail, Bookmark, Event, Text Search
- Frame-by-Frame forward and backward playback in search mode
- Playback with 1/2x, 1x, 2x, 4x, 8x, 16x, 32x, 64x speed

Powerful Networking

- 1,024 DVRs can be connected simultaneously to VMS
- Up to 128 channels can be displayed on one PC
- Redistribution streaming server supports multiple client connections
- Automatic schedule backup via network
- Triple streaming(Dual H.264 & MJPEG) support

Mobile Connection

- Live monitoring & playback for Andrid and iPhone
- Easy & Quick connection and registration
- Real-time push alarm to smart phone and mobile device

External Mass Storage Interface

- eSATA storage interface supporting up to 32TB (HTC1601F & HTC801F)

HTC1601F



- 16ch video input supporting diverse video standards
- TVI 1080p & 720p, Analog and 960H
- Max. 30fps@1080p per channel recording & playback
- Max. 30fps@720p per channel recording & playback
- Up to 2 Internal hard disk drives
- Recording expansion up to 32TB via eSATA storage

HTC801F



- 8ch video input supporting diverse video standards
- TVI 1080p & 720p, Analog and 960H
- Max. 30fps@1080p per channel recording & playback
- Max. 30fps@720p per channel recording & playback
- Up to 2 Internal hard disk drives
- Recording expansion up to 32TB via eSATA storage

HTC410H HTC810H HTC1610H



- 4/8/16ch video input supporting diverse video standards
- TVI 1080p & 720p, Analog and 960H
- Compact appearance
- Max. 15fps@1080p per channel recording & playback
- Max. 30fps@720p per channel recording & playback
- 2HDD for HTC1610H, 1HDD for HTC810H & HTC410H

C1080 Camera Series

HD-SDI | EX-SDI

Premium Quality High-performance HD Camera

- / High-Resolution over 1,200TV Lines
- / True Plug & Play by PoC/CoC
- / 2.8~11mm IR corrective megapixel lens (Bullet, Dome)
- / Excellent Sensitivity with TDN, DSS, Smart IR
- / Easy installation by built-in Auto Focus
- / Anti-Motion Blur



C1080PBM

- 2.1Megapixel, Box Camera
- Supports HD-SDI or EX-SDI output
- Manual & DC Iris Lens
- Workable both with PoC and non PoC DVR



C1080BL-IR18 / C1080BL-IR18-AF / C1080BL-IR48-AF C1080PBL-IR18 / C1080PBL-IR18-AF / C1080PBL-IR48-AF

- 2.1Megapixel, Bullet Camera
- Supports HD-SDI or EX-SDI output
- Supports IR-LED(18EA or 48EA), Auto-Focus
- Dust-proof & Water-proof (IP66)
- PoC/CoC : C1080PBL Series



C1080D / C1080D-IR / C1080D-AF / C1080D-IR-AF C1080PD / C1080PD-IR / C1080PD-AF / C1080PD-IR-AF

- 2.1Megapixel, Plastic Dome Camera
- Supports HD-SDI or EX-SDI output
- IR-LED(24EA), Auto-Focus
- PoC/CoC : C1080PD Series



C1080VD / C1080VD-IR / C1080VD-AF / C1080VD-IR-AF C1080PVD / C1080PVD-IR / C1080PVD-AF / C1080PVD-IR-AF

- 2.1Megapixel, Vandal Dome Camera
- Supports HD-SDI or EX-SDI output
- IR-LED(24EA), Auto-Focus
- Dust-proof & Water-proof (IP66)
- PoC/CoC : C1080PVD Series



C1080PD-IR24-F3.6 / C1080PBL-IR24-F3.6

- 2.1Megapixel Plastic dome / bullet camera
- Supports only EX-SDI output
- IR-LED(24ea), 3.6mm(or 6mm) fixed lens
- PoC/CoC support



C1080PT-Z20B / C1080PT-Z10B

- Optical 20x zoom (4.7~94mm) & Digital 32x zoom
- Optical 10x zoom (5.1~51mm) & Digital 32x zoom
- High-speed 360° panning & 180° Tilting
- Dust-proof & Water-proof (IP66)
- Operating temperature adjustable built-in Fan & Heater : C1080PT-Z20B

D1080 Camera Series

HD-SDI | EX-SDI

High Quality Mid-range HD Camera

- / True Plug & Play by PoC/CoC
- / 2.8~11mm IR corrective megapixel lens (Bullet, Dome)
- / Excellent Sensitivity with TDN, DSS, Smart IR
- / Easy installation by built-in Auto Focus
- / Anti-Motion Blur



D1080BL-IR18 / D1080BL-IR18-AF D1080PBL-IR18 / D1080PBL-IR18-AF

- 2.1Megapixel, Bullet Camera
- Supports HD-SDI or EX-SDI output
- Supports IR-LED(18EA), Auto-Focus
- Dust-proof & Water-proof (IP66)
- PoC/CoC : D1080PBL-IR18 Series



D1080BL-IR48 / D1080BL-IR48-AF D1080PBL-IR48 / D1080PBL-IR48-AF

- 2.1Megapixel, Bullet Camera
- Supports HD-SDI or EX-SDI output
- Supports IR-LED(48EA), Auto-Focus
- Dust-proof & Water-proof (IP66)
- PoC/CoC : D1080PBL-IR48 Series



D1080D / D1080D-IR / D1080D-AF / D1080D-IR-AF D1080PD / D1080PD-IR / D1080PD-AF / D1080PD-IR-AF

- 2.1Megapixel, Plastic Dome Camera
- Supports HD-SDI or EX-SDI output
- Supports IR-LED(24EA), Auto-Focus
- PoC/CoC : D1080PD Series



D1080VD / D1080VD-IR / D1080VD-AF / D1080VD-IR-AF D1080PVD / D1080PVD-IR / D1080PVD-AF / D1080PVD-IR-AF

- 2.1Megapixel, Vandal Dome Camera
- Supports HD-SDI or EX-SDI output
- Supports IR-LED(24EA), Auto-Focus
- Dust-proof & Water-proof (IP66)
- PoC/CoC : D1080PVD Series

K1080 Camera Series

HD-SDI | EX-SDI

The Best Optimized General Purpose HD Camera

- / 1/2.9" 2.1 Megapixel Sony Exmor CMOS
- / Built-in EX-SDI transmitter for all models
- / Built-in highly efficient megapixel lens of DC iris, 2.8mm~12mm, 3.6mm(6mm)
- / 3 DNR adopted (noise removal)
- / True Day & Night (ICR)



K1080H-IR100 / K1080H-IR100-F3.6(6)

- 2.1 Megapixel Sony Sensor housing camera
- Built-in EX-SDI transmitter (HD-SDI/EX-SDI optional)
- IR-LED: ULTRA HIGH POWER: 2pcs / NORMAL: 60pcs
- Dust-proof/Water-proof (IP66)
- K1080H-IR100-F3.6(6): Fixed lens



K1080BL-IR48 / K1080BL-IR48-F3.6(6)

- 2.1 Megapixel Sony Sensor bullet camera
- Built-in EX-SDI transmitter (HD-SDI/EX-SDI optional)
- IR-LED : 48pcs
- Dust-proof/Water-proof (IP66)
- K1080BL-IR48-F3.6(6): Fixed lens, no OSD



K1080D-IR30 / K1080D-IR24-F3.6(6)

- 2.1 Megapixel Sony Sensor dome camera
- Built-in EX-SDI transmitter (HD-SDI/EX-SDI optional)
- IR-LED: 30pcs / 24pcs
- K1080D-IR24-F3.6(6): Fixed lens, no OSD

Smart Flame Detection Solution

C1080PBL-AF-F2 C1080BL-AF-F2

- 2.1Megapixel, Bullet Camera
- 2pcs of built in flame detecting sensor
- Detection distance & angle: 30m / 80 °
- Supports HD-SDI or EX-SDI output
- Auto-Focus, dust-proof & Water proof
- PoC/CoC: C1080PBL-AF-F2



C1080BL-F1

- 2.1Megapixel, Bullet Camera
- 1pcs of built in flame detecting sensor
- Detection distance & angle: 30m / 80 °
- Supports only EX-SDI output
- Fixed lens
- Low cost compact size (for indoor use)



HD-SDI Accessories & Storage

Diversity of System Configuration HD Accessories

- / Converters for PoC/CoC/EX-SDI
- / Converters between HD and SD
- / Converters between SDI and HDMI
- / Fiber-Optic Transmitter/Receiver
- / DVR dedicated storage equipment



PoC Converter & Repeater



- RP101P**
- 1 ch PoC Repeater
 - Supports PoC/CoC, EX-SDI
 - Powered by DVR



- RP102P**
- 1 ch PoC Distributor
 - Supports PoC/CoC, EX-SDI
 - Powered by DVR



- PS101P**
- Power supply for PoC devices
 - Supports PoC/CoC, EX-SDI



- OPT-TX1 / RX1-RS485P**
- 1 ch PoC Fiber-Optic Transmitter/Receiver
 - Power supply to PoC HD cameras
 - Max. 20Km HD-SDI transmission
 - HD-SDI Video & Data transmission



- OPT-TX4-RS485P**
- 4ch PoC Fiber-Optic Transmitter
 - Power supply to PoC HD cameras
 - Max. 20Km HD-SDI transmission



- OPT-RX16-RS485C**
- 16ch CoC Fiber-Optic Receiver
 - 16 LC type Optical input, 16 BNC output
 - Up to 20Km Video/Data transmission
 - 19" Rack-mount type

DVR dedicated Storage Equipment



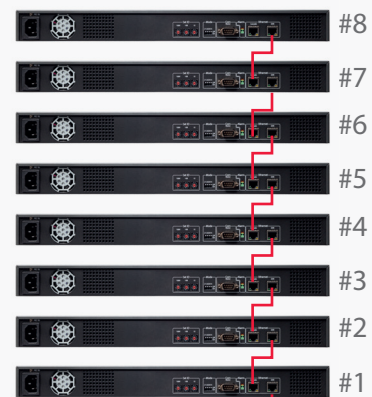
NS04R

- Dedicated storage equipment for WEBGATE DVR
- 4 Hot-Swap, SATA type hard disk bays
- Max. 128TB storage expansion by cascade connection
- Supports RAID Level 1/5/10 and Auto-Rebuilding
- IPFR(Intelligent Power Failure Recovery) file system
- At-the-PC Playback of removed DVR hard disk
- 1 Gigabit network port for DVR connection via Gigabit network switch
- 1 Gigabit network port for NS04R's cascade connection

HD DVR



NS04R



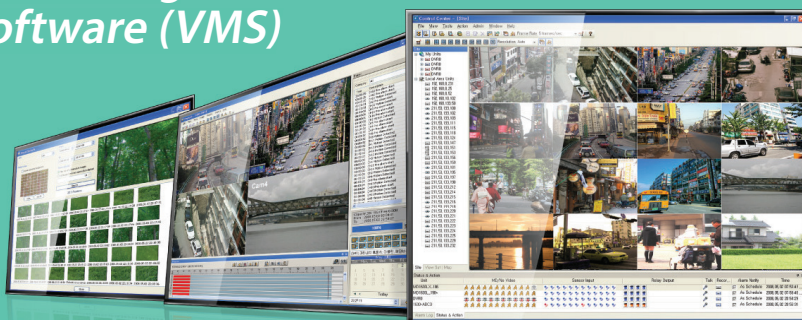
NS04R Interface
Network Interface

Note. If you visit WEBGATE's homepage (www.webgateinc.com), you can find the rest converters and storage equipment.

Software Solutions

Efficiency of Remote Monitoring Video Management Software (VMS)

- / Control Center
- / WinRDS
- / WebEye
- / WESPSDK



Control Center

- Video Management Software(VMS) supporting up to 1024 DVRs
- IP camera support by RTSP, RTP
- Consists of Monitoring, Playback, Setup program and Utilities
- Up to 64 split-screen per monitor
- Management of multi-monitors at a PC (Standard: 2, Pro: 6)
- Supports Multi-layered Map
- Status & Action panel showing the status of connected DVRs
- Rule-based Auto Action (Pro version)
- User's Action Log Save / Search function (Pro version)
- Automatic data backup via Schedule Backup utility
- Supports all WEBGATE products including IP camera, NVR, DVR
- Superior video engine displaying 12 Full-HD video with real-time
- Supports Calendar, Timeline, Event, Text, Smart, Thumbnail search
- Composition of user-defined split-screen through View Set
- Alarm Pop-up / Sequence switching function
- User-specific permission settings
- Event Log Save / Search by event log function
- Supports USB or dedicated Joystick Keyboard (Pro version)
- Supports At-the-PC Playback



Flexible and powerful WESP SDK

WESP(WEBGATE Embedded Standard Protocol) SDK has strong flexibility and interoperability, so customers can easily develop their own applications. WESP SDK supports all functions of all WEBGATE products including software.

Streaming Solution : WinRDS

WinRDS(Windows Re-Distribution Server) is a video streaming server providing Video/Audio, Alarm/Status information to multiple users.

- Max. 100 Users registration
- Max. 512 video stream input from DVRs (up to 500Mbps)
- Max. 512 video stream distribution to clients (up to 500Mbps)
- Authority management of DVR access and channel control



Mobile App for iPhone & Android phone

WebEye is an App for iOS and Android. WebEye can manage multiple DVRs under mobile environment.

- Live monitoring, playback and PTZ control
 - Screen split 1/4/9/16 support
 - P2P connection support
 - System logs to check power failure, hard disk errors, event logs and alarm status.
 - Adjustable streaming on mobile device by various network environment
- * Smart phone push alarm when using with flame detection camera





The World's first certified
by HDcctv Alliance

WEBGATE

HD-CCTV Solution provider

WEBGATE Div  CORPORATION

6F, Hanlim Venture Town B/D, 284, Gongdanro,
Gunpo, Gyeonggi-do, Korea(435-862)

www.webgateinc.com sales@webgateinc.com
<http://hd-cctv.co.kr> bu@webgateinc.com