



The World's first certified
by HDcctv Alliance

HD-CCTV Products & Solutions

Premium to your HD-CCTV

WEBGATE

HD-CCTV Solution provider



EN 2.3

WebGate Div.
Daemyung Enterprise Co.,Ltd.
6F, Hanlim Venture Town B/D, 689-6 Geumjeoung-Dong,
Gunpo-si, Gyeonggi-do, Korea (435-862)
T. +82. 31. 428. 9333 F. +82. 31. 455. 3955
www.webgateinc.com sales@webgateinc.com

WEBGATE

Enjoy the Genuine HD Security
with WEBGATE HD-CCTV Solution

Premium Real-time HD-SDI DVR Series

All-in-One DVR Series with built-in PoC/CoC, DoubleReach™, RAID function

The Best One Cable HD-SDI recorder

- / Full-frame Recording & Full-frame Playback
- / PoC(Power over Coax) / CoC(Control over Coax)
- / Long distance video transmission
- / Hardware RAID



PoC HD Camera

- Built-in PoC/CoC Functions
- Motorized Zoom, One-push Auto Focus
- Anti-Motion Blur

- True Plug & Play
- PoC (Power over Coax)
- CoC (Control over Coax)



PoC HD DVR

- 4, 8, 16ch HD-SDI DVR
- Built-in PoC/CoC Functions
- Built-in DoubleReach™ Receiver

The world's first Full-frame PoC/CoC HD-SDI DVR

- The world's first HDcctv certified PoC/CoC, DoubleReach DVR

Full-frame Recording & Playback HD DVR

- Full-frame, Real-time Full-HD DVR with PoC/CoC function
- 30fps recording & playback of HD1080p video per channel
- Excellent performance : 4ch 120fps, 8ch 240fps, 16ch 480fps

Market proven product quality

- The sharpest image quality similar to broadcasting image quality
- Strong lightning protection : 8K/500A lightning arresters
- IPFR : Intelligent Power Failure Recovery
- At-the-PC Playback feature for damaged HDD

Easy-to-Use GUI

- Sophisticated and easy to use user interface
- Digital zoom up to 10x in Live & Search mode
- Automatic HDD capacity calculation during recording setting
- Individual recording setup per channel
- Customized screen mode

Intelligent Search features

- Calendar, Smart, Thumbnail, Bookmark, Event, Text Search
- Frame-by-Frame backward playback in search mode
- Playback with 1/2x, 1x, 2x, 4x, 8x, 16x, 32x, 64x speed

Powerful Networking

- 1,024 DVRs can be connected simultaneously to CMS
- Up to 256 channels can be displayed on one PC
- Redistribution streaming server supports multiple client connections
- Automatic schedule backup via network
- Triple streaming (Full-HD, nHD, MJPEG) supported

Mobile Connection

- Live monitoring & playback for Android and iPhone
- Easy & Quick mobile connection using P2P technology

Dedicated Gigabit External Storage

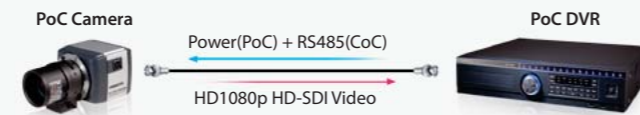
- Dedicated external storage supporting up to 128TB(HD1600F-PDR)
- eSATA storage interface supporting up to 32TB

PoC(Power over Coax)

- DVR can provide power to cameras through coaxial cable
- Cameras do not need additional installation of power supply

CoC(Control over Coax)

- DVR can control camera through coaxial cable
- Supports OSD menu, Zoom/Focus control, F/W upgrade



Long Distance video transmission over coax

- DoubleReach technology converts Full-HD video to the level indistinguishable from the original video, and DVR's built-in DoubleReach receiver overcomes HD-SDI distance limitation up to 400m (1,200ft).

High reliability by Hardware RAID system

- Supports RAID level 1,5,10



HD1600F-PDR

- The world's first PoC/CoC/DoubleReach 16ch HD-SDI DVR
- 480fps Full-frame recording & 480fps Full-frame playback
- Video transmission up to 400m by using DoubleReach camera

HD800F-PDR

- The world's first PoC/CoC/DoubleReach 8ch HD-SDI DVR
- 240fps Full-frame recording & 240 Full-frame playback
- Video transmission up to 400m by using DoubleReach camera

HD400F-PDR

- The world's first PoC/CoC/ DoubleReach 4ch HD-SDI DVR
- 120fps Full-frame recording & 120fps Full-frame playback
- Video transmission up to 400m by using DoubleReach camera

Advanced Real-time HD-SDI DVR Series

Built-in PoC/CoC, DoubleReach™ function

Gear up your security into Real-time

- / Full-frame Recording & Full-frame Playback
- / Real-time monitoring & recording without latency
- / Accurate recording technology
- / PoC / CoC
- / DoubleReach™
- / RAID



Full-frame & Real-time HD-SDI DVR

- Full-frame, Real-time HD-SDI DVR with optional specialties (PoC/CoC, DoubleReach, RAID)
- 4ch : 120fps, 8ch : 240fps, 16ch : 120fps & 480fps models

Market proven product quality

- The sharpest image quality similar to broadcasting image quality
- Strong lightning protection : 8K/500A lightning arresters
- IPFR : Intelligent Power Failure Recovery
- At-the-PC Playback feature for damaged HDD

Easy to Use GUI

- Sophisticated and easy to use user interface
- Digital zoom up to 10x in Live & Search mode
- Automatic HDD capacity calculation during recording setting
- Individual recording setup per channel
- Customized screen mode

Intelligent Search features

- Calendar, Smart, Thumbnail, Bookmark, Event, Text Search
- Frame-by-Frame backward playback in search mode
- Playback with 1/2x, 1x, 2x, 4x, 8x, 16x, 32x, 64x speed

Powerful Networking

- 1,024 DVRs can be connected simultaneously to CMS
- Up to 256 channels can be displayed on one PC
- Redistribution streaming server supports multiple client connections
- Automatic schedule backup via network
- Triple streaming (Full-HD, nHD, MJPEG) supported

Mobile Connection

- Live monitoring & playback for Android and iPhone
- Easy & Quick mobile connection using P2P technology

Long Distance Transmission by DoubleReach™

- -PD(R) models support up to 400m(1200ft) video transmission with DoubleReach camera

Dedicated Gigabit External Storage

- Dedicated external storage supporting up to 128TB(HD1600 Series)
- eSATA storage interface supporting up to 32TB

HD800F-R HD1600F-R HD1600M-PDR



- HDcctv certified 8ch/16ch HD-SDI DVR
- Recording & Playback performance
 - HD800F-R : 240fps recording & 240fps playback @HD1080p
 - HD1600F-R : 480fps recording & 480fps playback @HD1080p
 - HD1600M-PDR : 120fps recording & 120fps playback @HD1080p
- Recording storage expansion up to 128TB via NS04R (HD1600F-R / HD1600M-PDR) or up to 32TB via eSATA port
- Supports RAID 1/5/10 by using maximum 5 Internal hard disks
- Built-in PoC/CoC, DoubleReach function (HD1600M-PDR)

HDC801F-PD



- HDcctv certified 8ch HD-SDI DVR
- 240fps recording & 240fps playback @HD1080p
- Up to 2 Internal hard disks
- Recording storage expansion up to 32TB via eSATA port
- Built-in PoC/CoC, DoubleReach function

HDC400F-PD



- HDcctv certified 4ch HD-SDI DVR
- Compact appearance of A4 size
- 120fps recording & 120fps playback@HD1080p
- 1 Internal hard disk
- Recording storage expansion up to 32TB via eSATA port
- Built-in PoC/CoC, DoubleReach function

Standard & Real-time HD-SDI DVR Series

The right of choice for your **line-up!**

- / 4ch / 8ch / 16ch
- / Real-time monitoring & recording without latency
- / Large / Medium / Compact appearance
- / Diverse recording performance
- / External storage expansion



Standard HD-SDI Recorder

- Standard & Real-time DVRs by recording performance
- 4ch : 120fps, 8ch : 120fps & 240fps, 16ch : 120fps & 480fps

Market proven product quality

- The sharpest image quality similar to broadcasting image quality
- Strong lightning protection : 8K/500A lightning arresters
- IPFR : Intelligent Power Failure Recovery
- At-the-PC Playback feature for damaged HDD

Easy to Use GUI

- Sophisticated and easy to use user interface
- Digital zoom up to 10x in Live & Search mode
- Automatic HDD capacity calculation during recording setting
- Individual recording setup per channel
- Customized screen mode

Intelligent Search features

- Calendar, Smart, Thumbnail, Bookmark, Event, Text Search
- Frame-by-Frame backward playback in search mode
- Playback with 1/2x, 1x, 2x, 4x, 8x, 16x, 32x, 64x speed

Powerful Networking

- 1,024 DVRs can be connected simultaneously to CMS
- Up to 256 channels can be displayed on one PC
- Redistribution streaming server supports multiple client connections
- Automatic schedule backup via network
- Triple streaming (Full-HD, nHD, MJPEG) supported

Mobile Connection

- Live monitoring & playback for Android and iPhone
- Easy & Quick mobile connection using P2P technology

Long Distance Transmission

- Longer distance video transmission comparing to competitor's (200m with RG-6 / 150m with RG-59)

Dedicated Gigabit External Storage

- Dedicated external storage supporting up to 128TB (HD1600F)
- eSATA storage interface supporting up to 32TB

HD1600F



- HDcctv certified 16ch HD-SDI DVR
- 480fps recording & 480fps playback @HD1080p
- Up to 5 Internal hard disks
- Recording storage expansion up to 128TB via NS04R or up to 32TB via eSATA port

HDC801F HDC801H HDC1601M



- HDcctv certified 8ch/16ch HD-SDI DVR
- Recording & Playback performance
- HDC801F : 240fps recording & 240fps playback @HD1080p
- HDC801H / HDC1601M : 120fps recording & 120fps playback @HD1080p
- Up to 2 Internal hard disks
- Recording storage expansion up to 32TB via eSATA port

HDC400F



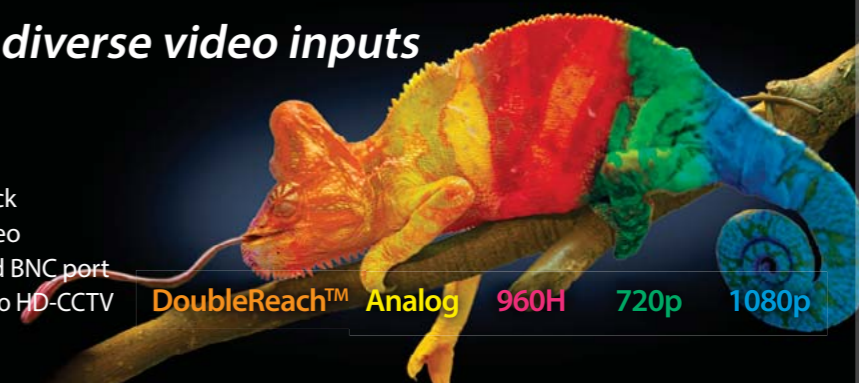
- HDcctv certified 4ch HD-SDI DVR
- Compact appearance of A4 size
- 120fps recording & 120fps playback @HD1080p
- Up to 2 Internal hard disks

Penta-brid HD DVR Series

Hybrid HD DVR
with a long distance & diverse video inputs

- / Auto detection of diverse video formats
- / Full-frame, Real-time recording & playback
- / Max. 400m video transmission of HD video
- / Diverse video outputs via HDMI, VGA and BNC port
- / Step by step upgrade your legacy CCTV into HD-CCTV

DoubleReach™ Analog 960H 720p 1080p



Penta-brid HD DVR

- Supports Analog, 960H, 720p, 1080p and DoubleReach video input
- Full-frame, Real-time recording & playback
- Allows different video input formats per channel
- Supports max. 400m(1,200ft) HD-SDI transmission distance

Market proven product quality

- The sharpest image quality similar to broadcasting image quality
- Strong lightning protection : 8K/500A lightning arresters
- IPFR : Intelligent Power Failure Recovery
- At-the-PC Playback feature for damaged HDD

Easy to Use GUI

- Sophisticated and easy to use user interface
- Digital zoom up to 10x in Live & Search mode
- Automatic HDD capacity calculation during recording setting
- Individual recording setup per channel
- Customized screen mode

Intelligent Search features

- Calendar, Smart, Thumbnail, Bookmark, Event, Text Search
- Frame-by-Frame backward playback in search mode
- Playback with 1/2x, 1x, 2x, 4x, 8x, 16x, 32x, 64x speed

Powerful Networking

- 1,024 DVRs can be connected simultaneously to CMS
- Up to 256 channels can be displayed on one PC
- Redistribution streaming server supports multiple client connections
- Automatic schedule backup via network
- Triple streaming (H.264 High & Normal, MJPEG Normal) supported

Mobile Connection

- Live monitoring & playback for Android and iPhone
- Easy & Quick mobile connection using P2P technology

Dedicated Gigabit External Storage

- Dedicated external storage supporting up to 128TB(HS1600F-D)
- eSATA storage interface supporting up to 32TB



HS1600F-D

- 16ch video input supporting diverse video standards
- Max. 30fps per channel recording & playback
- Up to 5 Internal hard disks
- DoubleReach function on all channels
- Recording storage expansion up to 128TB via NS04R or up to 32TB via eSATA port
- HD video output via HDMI & VGA, and analog sequential switching & pop-up video output via BNC



HSC1601F-D

- 16ch video input supporting diverse video standards
- Max. 30fps per channel recording & playback
- Up to 2 Internal hard disks
- DoubleReach function on all channels
- Recording capacity expansion up to 32TB via eSATA port
- HD video output via HDMI & VGA, and analog sequential switching & pop-up video output via BNC



HSC801F-D

- 8ch video input supporting diverse video standards
- Max. 30fps per channel recording & playback
- Up to 2 Internal hard disks
- DoubleReach function on all channels
- Recording capacity expansion up to 32TB via eSATA port
- HD video output via HDMI & VGA, and analog sequential switching & pop-up video output via BNC

C1080 Camera Series

The World's Best HD-SDI Camera Series

- / True Plug & Play by PoC/CoC
- / High-Resolution over 1,200TV Lines
- / 2.8~11mm IR corrective megapixel lens (Bullet, Dome)
- / Excellent Sensitivity with TDN, DSS, Smart IR
- / 2 Different Settings of Exposure & Backlight for Daytime and Nighttime
- / Easy installation by built-in Auto Focus
- / Anti-Motion Blur



C1080B / C1080PBM

- 2.1Megapixel Box Camera
- Supports Manual & DC Iris Lens
- PoC/CoC : C1080PBM



C1080BL-IR18 / C1080BL-IR18-AF / C1080BL-IR48-AF C1080PBL-IR18 / C1080PBL-IR18-AF / C1080PBL-IR48-AF

- 2.1Megapixel Bullet Camera
- Supports IR-LED(18EA or 48EA), Auto-Focus
- Dust-proof & Water-Proof (IP66)
- PoC/CoC : C1080PBL Series



C1080D / C1080D-IR / C1080D-AF / C1080D-IR-AF C1080PD / C1080PD-IR / C1080PD-AF / C1080PD-IR-AF

- 2.1Megapixel Plastic Dome Camera
- Supports IR-LED(24EA), Auto-Focus
- PoC/CoC : C1080PD Series



C1080VD / C1080VD-IR / C1080VD-AF / C1080VD-IR-AF C1080PVD / C1080PVD-IR / C1080PVD-AF / C1080PVD-IR-AF

- 2.1Megapixel Vandal Dome Camera
- Supports IR-LED(24EA), Auto-Focus
- Dust-proof & Water-Proof (IP66)
- PoC/CoC : C1080PVD Series



C1080PT-Z20 / C1080PT-Z20F

- 2Megapixel PTZ Camera
- 20x Optical Zoom and 10x Digital Zoom
- High speed 360° endless panning, 180° Tilting
- Dust-proof & Water-Proof (IP66) : C1080PT-Z20
- Flush-Mount : C1080PT-Z20F

D1080 Camera Series

Much easier configuration with DoubleReach™ Built-in HD-SDI Camera

- / Built-in DoubleReach Transmitter
- / High-Resolution over 1,200TV Lines
- / 2.8~11mm IR corrective megapixel lens (Bullet, Dome)
- / Excellent Sensitivity with TDN, DSS, Smart IR
- / 2 Different Settings of Exposure & Backlight for Daytime and Nighttime
- / Easy installation by built-in Auto Focus
- / Anti-Motion Blur



D1080PBM

- 2.1Megapixel Box Camera
- HD-SDI / DoubleReach video output
- Supports Manual & DC Iris Lens
- PoC/CoC : D1080PBM



D1080BL-IR18 / D1080BL-IR18-AF D1080PBL-IR18 / D1080PBL-IR18-AF

- 2.1Megapixel Bullet Camera
- HD-SDI / DoubleReach video output
- Supports IR-LED(18EA), Auto-Focus
- Dust-proof & Water-Proof (IP66)
- PoC/CoC : D1080PBL-IR18 Series



D1080BL-IR48 / D1080BL-IR48-AF D1080PBL-IR48 / D1080PBL-IR48-AF

- 2.1Megapixel Bullet Camera
- HD-SDI / DoubleReach video output
- Supports IR-LED(48EA), Auto-Focus
- Dust-proof & Water-Proof (IP66)
- PoC/CoC : D1080PBL-IR48 Series



D1080D / D1080D-IR / D1080D-AF / D1080D-IR-AF D1080PD / D1080PD-IR / D1080PD-AF / D1080PD-IR-AF

- 2.1Megapixel Plastic Dome Camera
- HD-SDI / DoubleReach video output
- Supports IR-LED(24EA), Auto-Focus
- PoC/CoC : D1080PD Series



D1080VD / D1080VD-IR / D1080VD-AF / D1080VD-IR-AF D1080PVD / D1080PVD-IR / D1080PVD-AF / D1080PVD-IR-AF

- 2.1Megapixel Vandal Dome Camera
- HD-SDI / DoubleReach video output
- Supports IR-LED(24EA), Auto-Focus
- Dust-proof & Water-Proof (IP66)
- PoC/CoC : D1080PVD Series

HD-SDI Converter

WEBGATE has all necessary accessories to configure the HD-CCTV system

- / Converters for PoC/CoC/DoubleReach™
- / Converters between HD and SD
- / Converters between SDI and HDMI
- / Fiber-Optic Transmitter/Receiver



PoC/CoC and DoubleReach™ Converters



RP101P

- 1ch PoC Repeater
- Supports PoC/CoC, DoubleReach
- Power can be supplied from DVR



DR101P-TX/RX

- 1ch DoubleReach Transmitter/Receiver
- Doubles HD-SDI transmission distance
- Can be worked with RP101P



PS101P

- Power supply for PoC devices
- Supports PoC/CoC, DoubleReach



OPT-TX4-RS485P

- 4ch PoC Fiber-Optic Transmitter
- Power supply to PoC HD cameras
- Max. 20Km HD-SDI & Data transmission

HD-SDI Converters



RP102

- HD-SDI Repeater & Distributer
- 1ch HD-SDI input, 2ch output
- Extends HD-SDI transmission distance



OPT-TX1-RS485U(C)

- 1ch Fiber-Optic Transmitter
- 1 BNC input, 1 LC type Optical output
- Up to 20Km Video/Data transmission



HD2SD

- HD-SDI to CVBS Converter
- 1ch HD-SDI input, 1ch CVBS output
- 1ch HD-SDI output (Loop-Through)



OPT-RX1-RS485U(C)

- 1ch Fiber-Optic Receiver
- 1 LC type Optical input, 1 BNC output
- Up to 20Km Video/Data transmission



SD2HD

- CVBS to HD-SDI Converter
- Max. 6ch CVBS input, 1ch HD-SDI Output
- 1/4/6 split-screen mode selectable
- 16:9, 4:3 ratio selectable



OPT-TX4-RS485U(C)

- 4ch Fiber-Optic Transmitter
- 4 BNC input, 4 LC type Optical output
- Up to 20Km Video/Data transmission



HDMI2SDI

- HDMI to HD-SDI Converter
- 2ch HDMI input, 1ch HD-SDI output
- Audio support



OPT-RX16-RS485U(C)

- 16ch Fiber-Optic Receiver
- 16 LC type Optical input, 16 BNC output
- Up to 20Km Video/Data transmission
- 19" Rack-mount type



SDI2HDMI

- HD-SDI to HDMI Converter
- 1ch HD-SDI input, 1ch HDMI output

Note. -UC models have HDcctv certificate

External Storage

The best choice to secure your valuable data
Fast recording & playback by using Gigabit Ethernet

- / DVR dedicated storage equipment
- / Storage capacity expansion up to 128TB
- / Diverse RAID level configuration
- / Hot-Swap & Auto-Rebuilding
- / Easy interface with DVR



DVR dedicated Storage Equipment



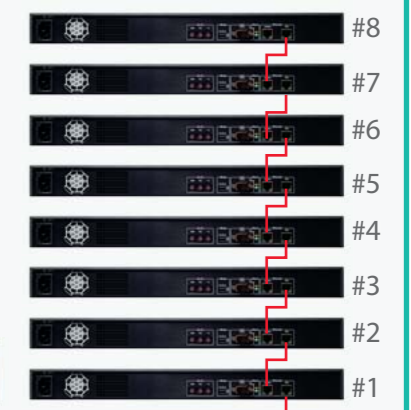
NS04R

- Dedicated storage equipment for WEBGATE DVR
- 4 Hot-Swap, SATA type hard disk bays
- Max. 128TB storage expansion by cascade connection
- Supports RAID Level 1/5/10 and Auto-Rebuilding
- IPFR(Intelligent Power Failure Recovery) file system
- At-the-PC Playback of removed DVR hard disk
- 1 Gigabit network port for DVR connection
- 1 Gigabit network port for NS04R's cascade connection

HD DVR



NS04R



NS04R Interface
Network Interface

eSATA Storage Equipment



ES0104

- 1U/4Bays, eSATA - SATA II RAID sub-system
- Max. 32TB storage expansion
- RAID : 0,1, 3, 5, 10, Large
- SATAII (up to 3Gbps) host bus interface
- Supports hot spare and automatic rebuild
- Local event notification
- Real-time drive activity and system status indicators
- Easy RAID level maintenance



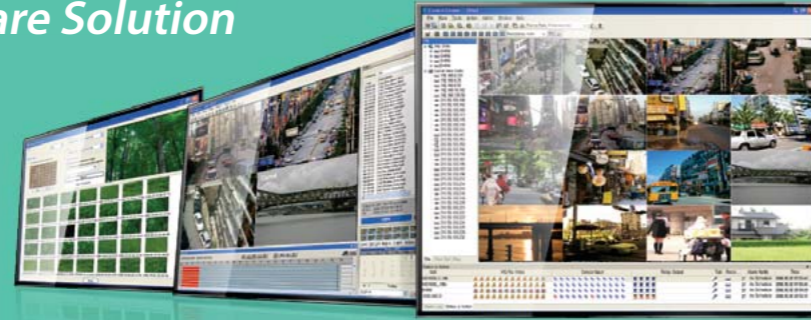
ES0212

- 2U/12Bays, eSATA - SATA II RAID sub-system
- Max. 32TB storage expansion
- RAID 0,1,10(1E),3,5,6 and JBOD
- Redundant power supplier
- eSATA (3Gbps) host interface
- Hot-spare and auto rebuild
- Inside buzzer alarm
- Password protection
- Serial port for external event notification
- Smart LCD panel
- Real-time drive and status notification

Software Solutions

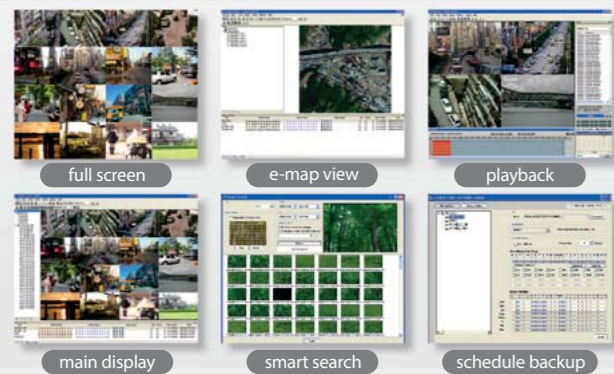
Build the complete Video Surveillance System with WEBGATE Software Solution

- / Control Center
- / WESP SDK
- / WinRDS
- / WebEye



Control Center

- Central Monitoring Software(CMS) supporting up to 1024 DVRs
- Consists of Monitoring, Playback, Setup program and Utilities
- Up to 64 split-screen per monitor
- Management of multi-monitors at a PC (Standard: 2, Pro: 6, Ent: 4+50 extended monitor)
- Supports Multi-layered Map
- Status & Action panel showing the status of connected DVRs
- Rule-based Auto Action (Pro, Ent version)
- User's Action Log Save / Search function (Pro, Ent version)
- Automatic data backup via Schedule Backup utility
- Supports all WEBGATE products including IP camera, NVR, DVR
- Superior video engine displaying 12 Full-HD video with real-time
- Supports Calendar, Timeline, Event, Text, Smart, Thumbnail search
- Composition of user-defined split-screen through View Set
- Alarm Pop-up / Sequence switching function
- User-specific permission settings
- Event Log Save / Search by event log function
- Supports USB or dedicated Joystick Keyboard (Pro, Ent version)
- Supports At-the-PC Playback



Flexible and powerful WESP SDK

WESP(WEBGATE Embedded Standard Protocol) SDK has strong flexibility and interoperability, so customers can easily develop their own applications. WESP SDK supports all functions of all WEBGATE products including software.

Streaming Solution : WinRDS

WinRDS(Windows Re-Distribution Server) is a video streaming server providing Video/Audio, Alarm/Status information to multiple users.

- Max. 100 Users registration
- Max. 512 video stream input from DVRs (up to 500Mbps)
- Max. 512 video stream distribution to clients (up to 500Mbps)
- Authority management of DVR access and channel control



Mobile App for iPhone & Android phone

WebEye is an App for iOS and Android. WebEye can manage multiple DVRs under mobile environment.

- Users can monitor, playback and control PTZ
- Live monitoring with 1/4/9/16 split screen
- System logs to check power failure, hard disk errors, event logs and alarm status
- User can monitor the video details through Digital Zoom



Market-proven Products



WEBGATE won the "Compliance Leadership Award" for 3 consecutive years by 2013



Top Class Resort facilities



License Plate Recognition**



Highway Monitoring**



Racecourse park**



Chain Stores



Banks



City Surveillance**



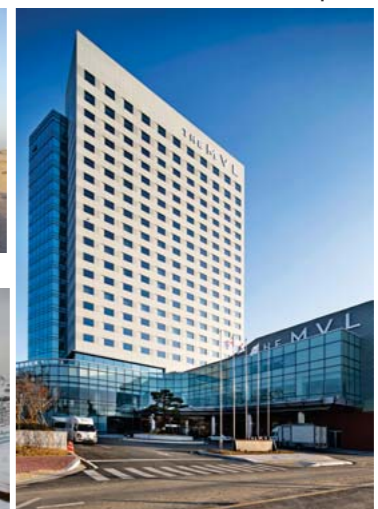
Department Store



Power Station



Building in Desert



Top Class Hotels



Casino



Construction Site

** These video images are taken by WEBGATE's Camera and DVR